

MISSION DATA CARD

OPORD		Callsign		Mission		Date/Time	
1286/2022		Edelweiss 7		Training		172000OCT22	
Task	Sam Evasion NCR					Freq	
AO	SAM 11/10					134.0	
Departure				Recovery			
				RWY10 VFR			
#	Callsign	Pilot	IFF	TCN	LSR	NET	
-1	Edelweiss 7-1	Nerkub	1771	21Y	1561		
-2	Edelweiss 7-2	Woodman	1772	84Y	1562		
-3	Edelweiss 7-3	Void	1773	84X	1563		
-3	Edelweiss 7-3	Woodman	1773	84X	1563		

LOADOUT

A/A	2xA120C			GUN	100% HEI-T
A/G				CHF	120
POD	HTS, TGP			FLR	0
TKS	2xFT300			FUEL	100%

TOLD

	Takeoff	Target	Joker	Bingo	Land
FUEL	11169				

AIRBASES

	Name	TCN	ATIS	GND	TWR	RWY	Elev	ILS
Arr	Akrotiri AFB	107X	288.2	240.1	339.85	28	62	109.7
Div	Akrotiri AFB	107X	288.2	240.1	339.85	28	62	109.7

FLIGHTPLAN

#	Name	Navaid/Coords/DME	ALT	TOT
1	PAPA	N34 39.760 E032 47.970	3000	
2	SA11.1	N34 57.790 E032 22.547	10000	
3	SA10.T1	N35 20.956 E033 17.500	10000	
4	ECHO	N34 41.470 E033 09.060	3000	

COMMS

Radio	Usage
1	4(AKT T), 16(OVRLRD)

OTHER FLIGHTS

Callsign	Mission	Airframe	Freq	TCN	Grpld	Laser
Cougar 1	Training	4x F-14B	261.25	21/84		156X
AO	BFM Training Area		Task	ACM Training		
T-Rex 2	Training	4x A-10C	132.25	27/90	25	165X
AO	NICOSIA CAS TRAINING AREA		Task	ILLUM + JDAM		
Monster 1	Training	4x A-10C	132.15	25/88	21	161X
AO	NICOSIA CAS TRAINING AREA		Task	ILUM + JDAM		
Edelweiss 1	Training	4x F/A-18C	261.25	21/84		156X
AO	ivo Cyprus		Task	Sam Evasion		
Panther 7	Training	4x F/A-18C	261.35	21/84		156X
AO	ivo Cyprus		Task	Sam Evasion		
Tiger 1	Training	4x F/A-18C	261.15	21/84	1	156X
AO	ETTR Ship Range		Task	SA, BE, Antishp Training, different Loadouts		
Edelweiss 6	Training	2x A-10C	134.65	21/84	40	166X
AO	BFM - Area		Task	BJT Prüfung		
Edelweiss 4	Training	2x F/A-18C	261.25	21/84		156X
AO			Task	Initial Training		

RADIO CHANNELS

#	Freq	Name
1		Flight/Squadron specific
2	288.2	Akrotiri ATIS
3	240.1	Akrotiri Ground
4	339.85	Aktrotiri Tower
5	335.05	Akrotiri Approach
6	360.1	Incirlik Tower
7	371.35	Incirlik Ground
8	377.475	Incirlik ATIS
9		No Preset
10	127.3	Paphos ATIS
11	353.8	Paphos Tower
12	304.0	CVN-73 George Washington
13	302.0	LHA-1 Tarawa
14	259.0	CV-59 Forrestal
15		No Preset
16	377.8	Overlord
17	265.0	KC-135 Texaco-1 medium/slow
18	319.8	KC-135 Arco-1
19	360.8	KC-135MPRS Arco-2
20	256.0	S-3B Recovery Tanker

RAMROD

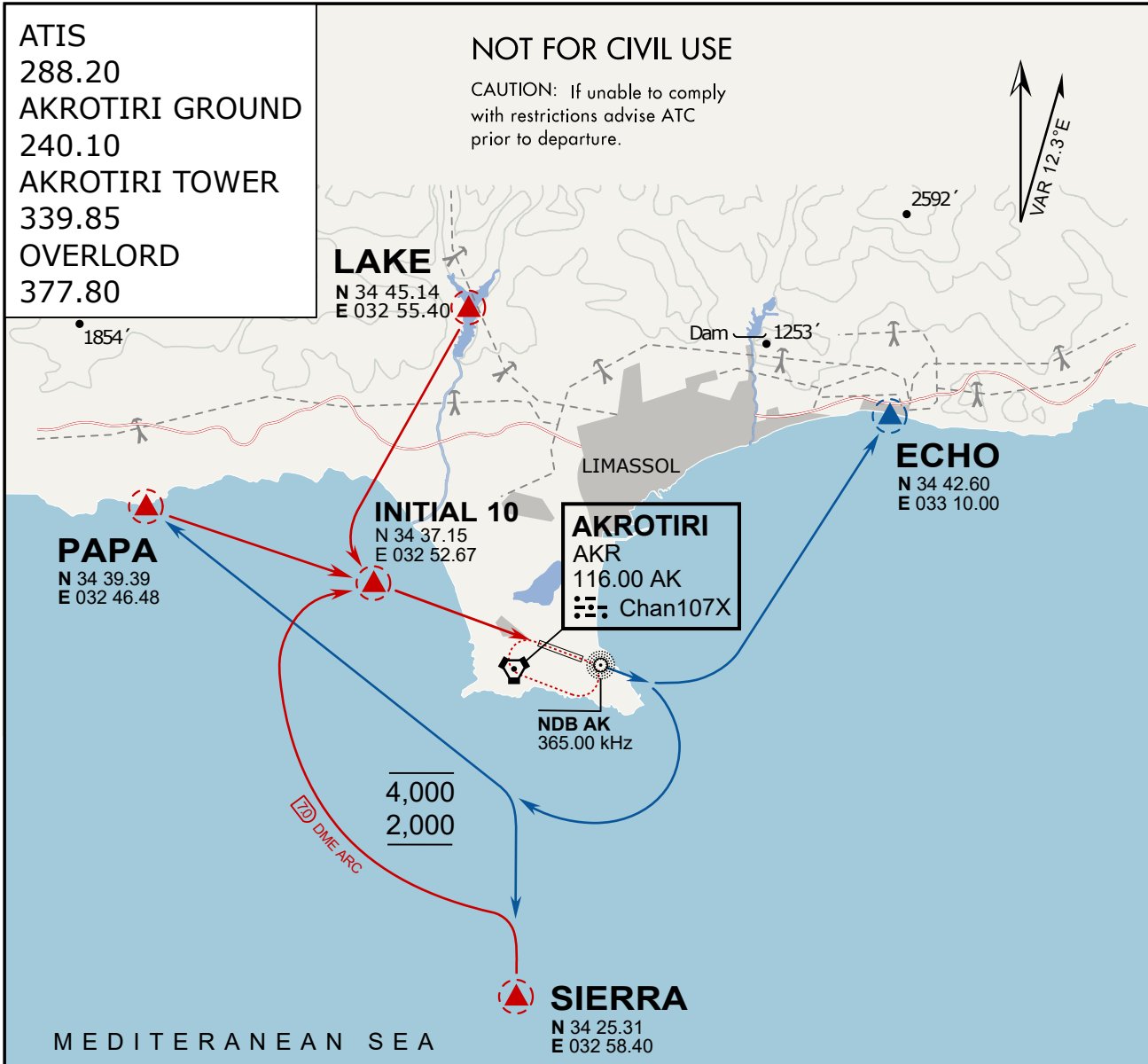
0	1	2	3	4	5	6	7	8	9
B	A	C	K	G	R	O	U	N	D

KTC 1400 C

	0	1	2	3	4	5	6	7	8	9
A	EGXK	UAW	YOD	RH	BV	NCS	LP	JT	FM	IQ
B	OXCY	WKA	PNJ	MV	IB	DHU	LQ	SR	ET	FG
C	RYBW	MXT	OLI	SA	GD	KCU	JN	HQ	FV	EP
D	UKDR	LSC	MXB	NW	PO	TIE	GH	JV	AY	QF
E	JSEO	RMB	IHU	QN	YA	PFQ	LW	KV	TX	CD
F	ICVN	QKD	OET	PL	AW	HXU	SG	RM	BJ	FY
G	JTBM	LQF	XGD	HW	KC	PYA	RE	IU	SV	ON
H	YKEI	PFT	LCR	NO	QS	AUG	WD	XM	VH	BJ
I	DHBF	JCT	LPW	YQ	VX	AIU	OK	SN	ER	GM
J	VHMO	APB	JWG	CT	KX	DFU	RY	EL	SQ	NI
K	VGXP	NHI	OTS	FJ	CM	ABW	QY	LD	RK	EU
L	JTEA	IBU	QKD	FG	PY	LMN	SV	RW	XO	CH
M	WQVX	KOS	YRE	PN	IJ	TFD	CM	HB	GU	AL
N	CIER	DWB	GKP	VQ	YA	LNK	MS	FO	TU	HJ
O	MSBL	JQU	HPG	TK	AE	WVN	RD	FY	CX	IO
P	BTUW	KOA	CLJ	QR	SI	VNX	FG	DY	PM	HE
Q	ICVN	WYK	QFM	PU	OL	ESB	RJ	HD	GT	XA
R	ISXE	LOW	MAG	HR	TB	VYJ	NU	PC	DF	KQ
S	NDGE	CMJ	SKA	PV	TF	HLR	XU	IY	QW	OB
T	SRBN	TUC	GXE	PO	FV	LIW	DJ	AK	HQ	YM
U	MTXJ	AVQ	LFY	OI	EC	SKD	UR	NH	BW	PG
V	SBLH	OJX	KVA	PQ	EW	GYN	RI	CD	TU	FM
W	HRUM	QFT	LBE	WC	VX	IOG	NJ	AY	PK	DS
X	WMAP	OQV	IHR	DN	EB	GLF	YS	CK	XJ	UT
Y	SQKR	XGC	LFN	TO	IU	EPH	DJ	AW	BV	YM

NAVAIDS

Id	Name	Channel	Position	Elevation
DAN	Incirlik	21	N37 00.950 E035 26.883	243
AKR	Akrotiri	107	N34 34.765 E032 57.769	147
PHA	Paphos	79	N34 42.997 E032 28.963	35
RMD	Ramat David	84	N32 39.892 E035 11.265	136



ARR / DEP ROUTE DESCRIPTION

ARRIVAL GENERAL

Pass Entry at 5.000' or below. Overhead Brake RWY 10: pass INITIAL 10 at 2.000' MSL. Straight-in RWY 10 : pass INITIAL 1.500' or below.

ARR RWY10 PAPA / LAKE: Direct initial.

ARR RWY10 SIERRA: Intercept ARC 7 of AKR to INITIAL 10.

ARR ECHO: no ENTRY.

DEPARTURE GENERAL

Pass Departure end of runway at 1.000' AGL or below. Keep RWY heading until coastline.

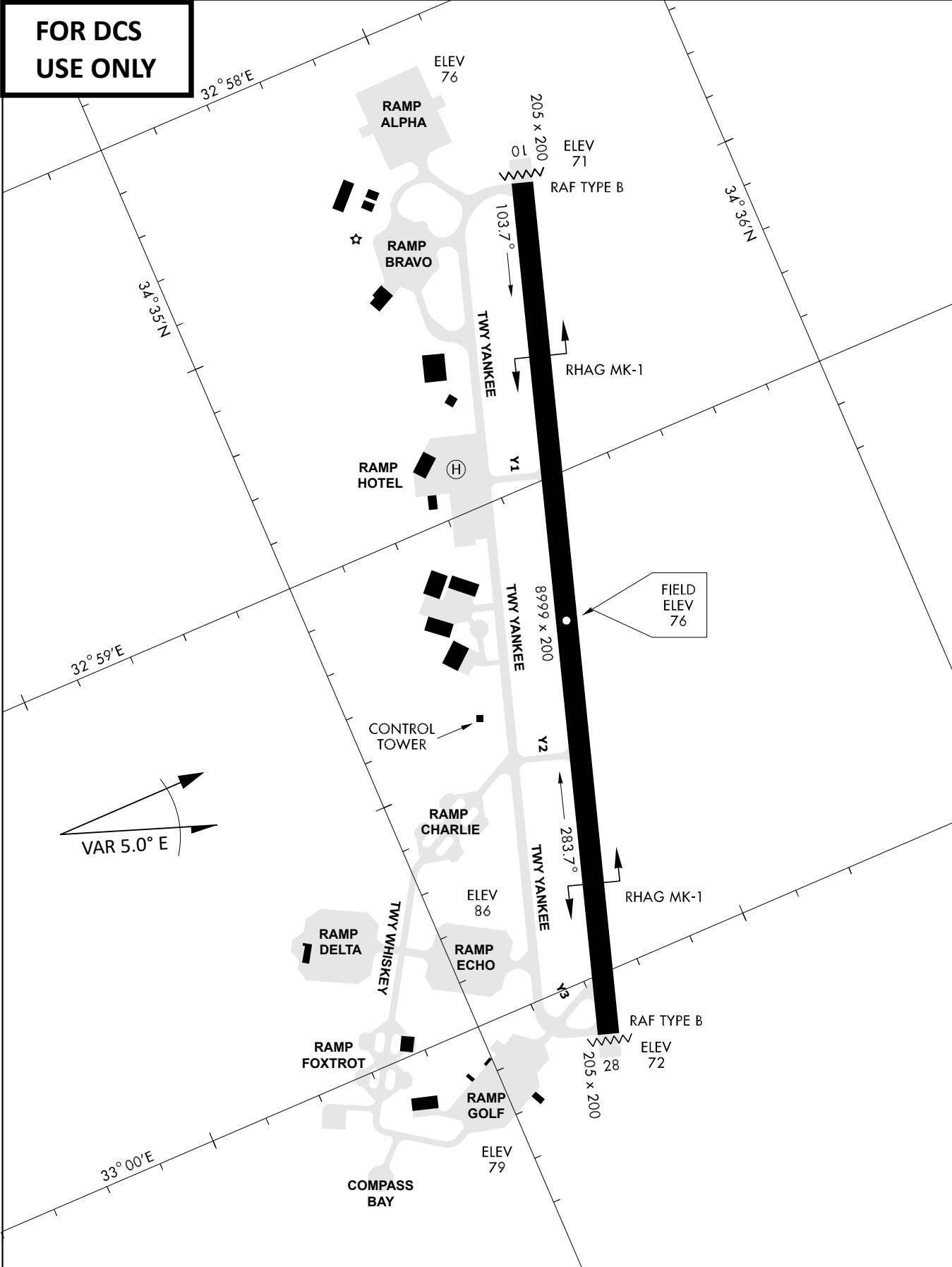
DEP RWY10 ECHO: Direct EXIT.

DEP RWY10 SIERRA: Climbing right turn, intercept R180 AKR to Sierra.

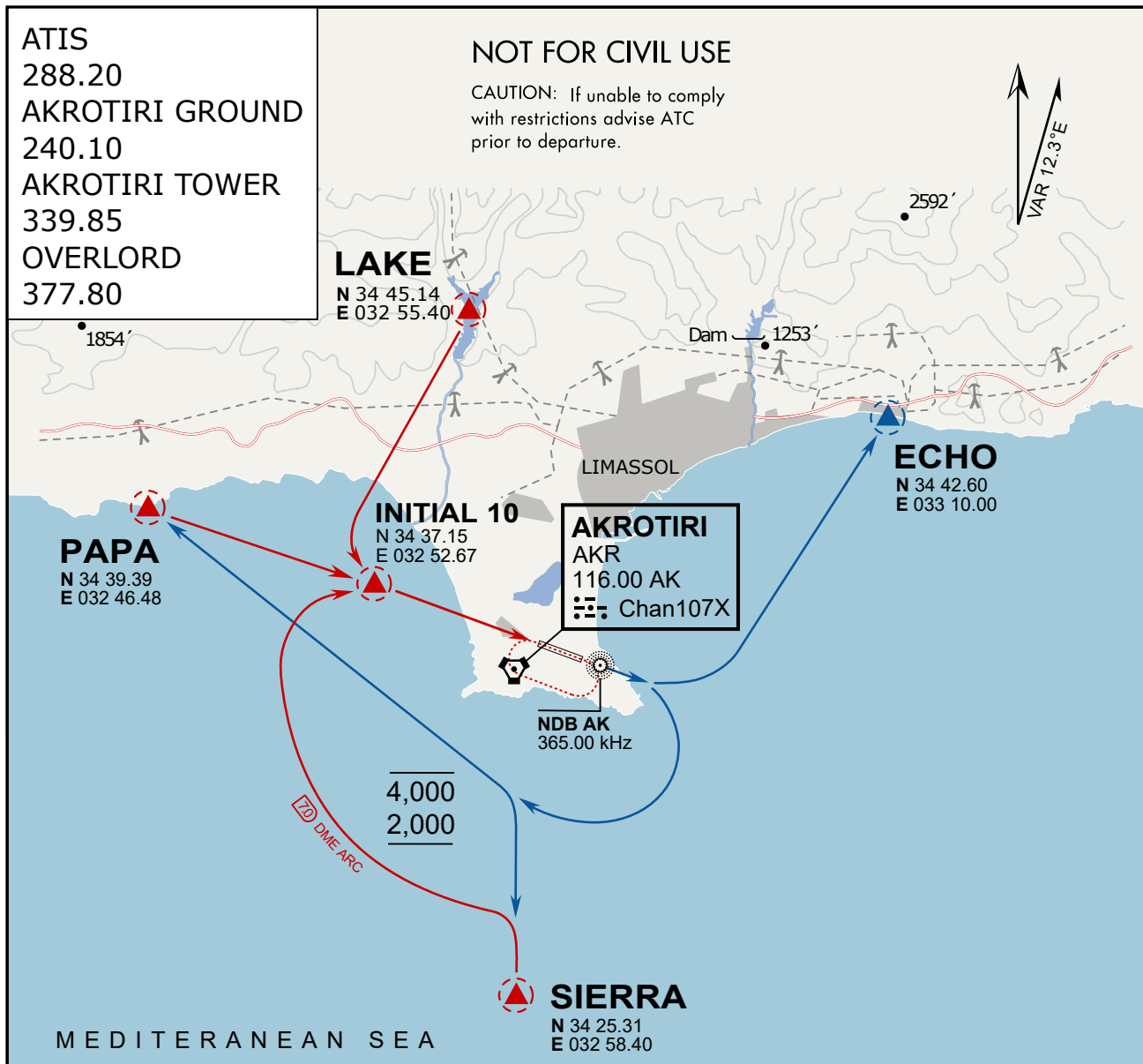
DEP RWY10 PAPA: Climbing right turn until R180 AKR, then direct Papa

DEP LAKE: no EXIT.

**FOR DCS
 USE ONLY**



ATIS	AKROTIRI GND	AKROTIRI TWR	OVERLORD CONTROL	TACAN	FIELD ELEVATION
288.20 MHz	240.10 122.10	339.85 130.075	377.8	AKR 107X	75 [ft] 23 [m]



ARR / DEP ROUTE DESCRIPTION

ARRIVAL GENERAL

Pass Entry at 5.000' or below. Overhead Brake RWY 10: pass INITIAL 10 at 2.000' MSL.
Straight-in RWY 10 : pass INITIAL 1.500' or below.

ARR RWY10 PAPA / LAKE: Direct initial.

ARR RWY10 SIERRA: Intercept ARC 7 of AKR to INITIAL 10.

ARR ECHO: no ENTRY.

DEPARTURE GENERAL

Pass Departure end of runway at 1.000' AGL or below. Keep RWY heading until coastline.

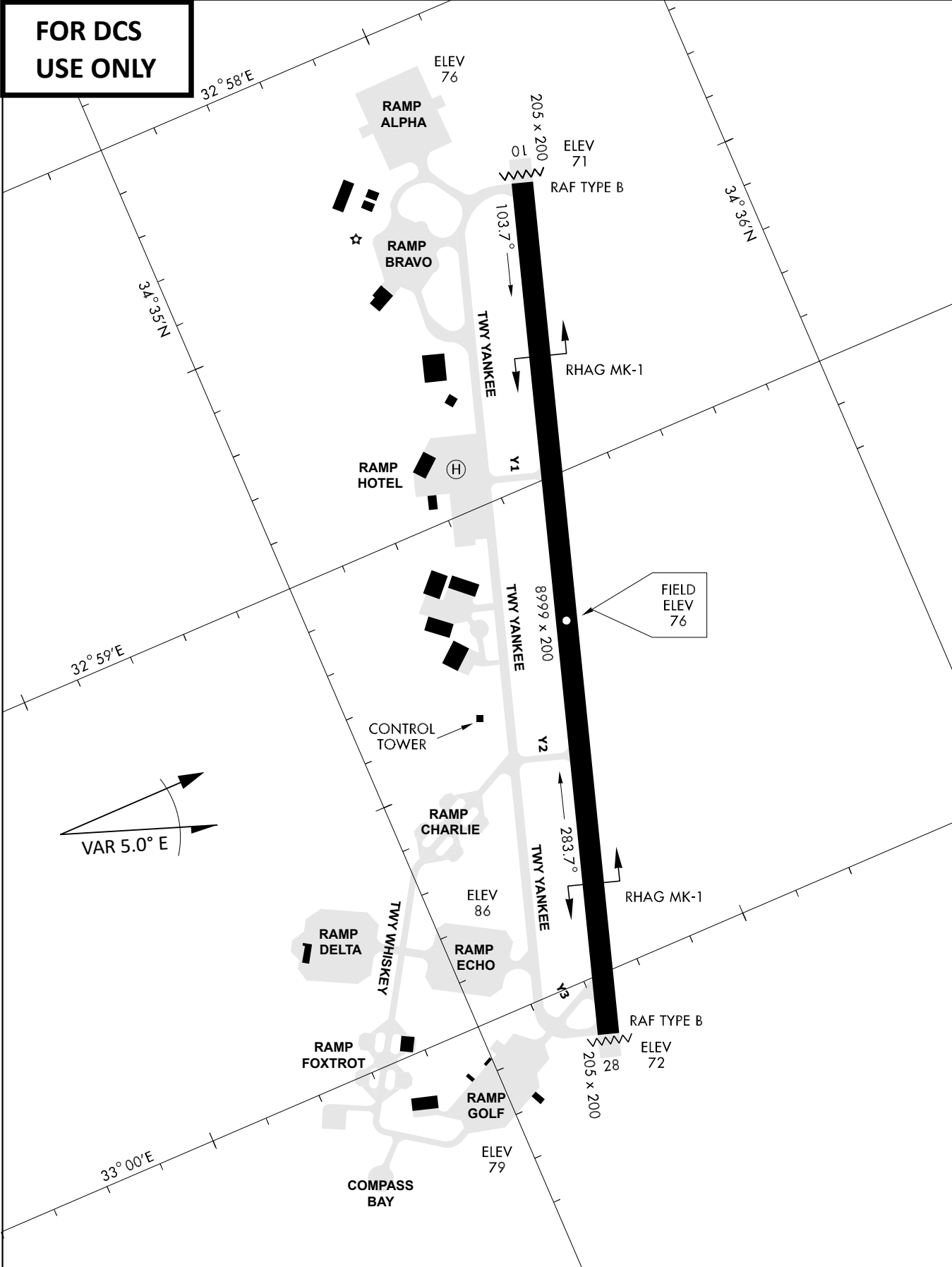
DEP RWY10 ECHO: Direct EXIT.

DEP RWY10 SIERRA: Climbing right turn, intercept R180 AKR to Sierra.

DEP RWY10 PAPA: Climbing right turn until R180 AKR, then direct Papa

DEP LAKE: no EXIT.

**FOR DCS
 USE ONLY**



ATIS	AKROTIRI GND	AKROTIRI TWR	OVERLORD CONTROL	TACAN	FIELD ELEVATION
288.20 MHz	240.10 122.10	339.85 130.075	377.8	AKR 107X	75 [ft] 23 [m]