

MISSION DATA CARD

OPORD	Callsign	Mission	Date/Time			
1273/2022	Raptor 1	Training	102030OCT22			
Task	NCR SAM Training					Freq
AO	SA11					135.0
Departure			Recovery			
RWY10 VFR			RWY10 VFR			
#	Callsign	Pilot	IFF	TCN	LSR	NET
-1	Raptor 1-1	Cyking	1771	21Y	1561	
-2	Raptor 1-2	Woodman	1772	84Y	1562	

LOADOUT

A/A	2xA120C	GUN	100% HEI-T
A/G		CHF	120
POD	HTS, TGP	FLR	0
TKS	FT300	FUEL	100%

TOLD

	Takeoff	Target	Joker	Bingo	Land
FUEL	9166	7000	4000	3000	1500

AIRBASES

	Name	TCN	ATIS	GND	TWR	RWY	Elev	ILS
Dep	Akrotiri AFB	107X	288.2	240.1	339.85	28	62	109.7
Arr	Akrotiri AFB	107X	288.2	240.1	339.85	28	62	109.7
Div	Paphos Internationl	79X	127.3		353.8	29	40	108.9

FLIGHTPLAN

#	Name	Navaid/Coords/DME	ALT	TOT
1	PAPA	N34 39.760 E032 47.970	5000	
2	ECHO	N34 41.470 E033 09.060	5000	
3	SA11.1	N34 57.790 E032 22.547	15000	

OTHER FLIGHTS

Callsign	Mission	Airframe	Freq	TCN	Grpld	Laser
Edelweiss 1	Training	4x F/A-18C	261.45	21/84		156X
AO	SA10	Task	NCR SAM Training			
T-Rex 2	Training	4x A-10C	132.25	27/90	25	165X
AO	NICOSIA CAS TRAINING AREA	Task	CAS			
Monster 1	Training	4x A-10C	132.15	25/88	21	161X
AO	NICOSIA CAS TRAINING AREA	Task	CAS			
Tiger 1	Training	4x F/A-18C	261.15	21/84	1	156X
AO	ETTR Ship Range	Task	Antishp Training, different Loadouts			
Edelweiss 6	Training	2x A-10C	134.65	21/84	40	166X
AO	Arkamas Bomb Range	Task	BJT			
Edelweiss 7	Training	4x F-16C	134.0	21/84		156X
AO	SA11	Task	NCR SAM Training			
Claw 2	Training	2x AH-64D	133.5	21/84		156X
AO	Akamas Bombing Range	Task				
Viper 1	Training	2x F-16C	134.15	21/84		156X
AO	Cape Pyla Training Range	Task	LCR Check Training			
Panther 3	Training	4x F/A-18C	261.25	21/84	3	157X
AO	ETTR Ship Range	Task	Antishp Training, different Loadouts			

RADIO CHANNELS

#	Freq	Name
1		Flight/Squadron specific
2	288.2	Akrotiri ATIS
3	240.1	Akrotiri Ground
4	339.85	Aktrotiri Tower
5	335.05	Akrotiri Approach
6	360.1	Incirlik Tower
7	371.35	Incirlik Ground
8	377.475	Incirlik ATIS
9		No Preset
10	127.3	Paphos ATIS
11	353.8	Paphos Tower
12	304.0	CVN-73 George Washington
13	302.0	LHA-1 Tarawa
14	259.0	CV-59 Forrestal
15		No Preset
16	377.8	Overlord
17	265.0	KC-135 Texaco-1 medium/slow
18	319.8	KC-135 Arco-1
19	360.8	KC-135MPRS Arco-2
20	256.0	S-3B Recovery Tanker

RAMROD

0	1	2	3	4	5	6	7	8	9
H	A	N	D	S	O	M	E	L	Y

KTC 1400 C

	0	1	2	3	4	5	6	7	8	9
A	AFYK	UPQ	WCJ	TD	IX	VBO	GM	LR	EN	HS
B	XAIT	CVK	DHL	SF	WQ	RPB	ON	GJ	UY	ME
C	BRNY	QPK	XJU	OD	ET	CGV	MI	SA	WH	FL
D	NCSP	FHA	OXG	LU	BK	MQE	JI	YD	TV	WR
E	WPDQ	OHN	UVA	IC	LM	SYG	BR	KJ	XE	FT
F	HFGO	RBA	QYJ	XD	KN	PTS	CW	LU	VI	EM
G	JUPF	XKN	HRD	QM	CY	SBW	ET	VI	OG	AL
H	JRUQ	SOE	MVA	KL	TH	NGP	BI	CF	WX	DY
I	NSPK	YCB	VWI	QH	UG	LEJ	OD	TF	RA	MX
J	CFLP	JID	OGH	TY	EV	MRS	UB	WX	KN	AQ
K	DUIJ	ASV	OXY	ME	RQ	GCP	TF	HW	NL	BK
L	TQPK	LHO	VXJ	YG	MF	WDS	EI	BU	RN	CA
M	HIXV	SGF	QDT	KA	OR	JWM	LB	UN	YP	CE
N	TDLI	VAN	SPF	QW	EY	JGK	UR	OX	BC	MH
O	GRDN	JBP	AFV	UX	KI	SLY	QO	WE	TH	CM
P	YQOL	HED	PMX	WA	FN	KRU	BC	TJ	SV	GI
Q	NTMC	VJX	RPB	GO	EH	UID	SQ	YL	FA	KW
R	WNAK	PTG	COY	UF	QD	HMS	RE	JB	IV	LX
S	XFYC	UBL	SQN	JR	WM	IVA	ET	OH	PK	GD
T	PKOH	BST	DXU	QI	GA	EYF	LJ	VN	CW	RM
U	SBJI	PLD	WKN	QM	GV	EAX	HY	UT	CO	RF
V	DUOM	YVS	RNQ	FC	HJ	AXE	PW	IT	KG	LB
W	TWUQ	DCJ	ROB	XV	PM	ESI	YH	AG	NL	FK
X	KHVI	WXC	LBG	NM	YF	DJE	RU	PA	QT	OS
Y	UOQR	GSH	DCW	AV	BT	EPI	LN	FM	KX	JY

NAVAIDS

Id	Name	Channel	Position	Elevation
DAN	Incirlik	21	N37 00.950 E035 26.883	243
AKR	Akrotiri	107	N34 34.765 E032 57.769	147
PHA	Paphos	79	N34 42.997 E032 28.963	35
RMD	Ramat David	84	N32 39.892 E035 11.265	136
OS66	Kuweires Military Aviation Institute	36	N36 11.362 E037 34.226	1200

**FOR DCS
 USE ONLY**



ATIS	AKROTIRI GND	AKROTIRI TWR	OVERLORD CONTROL	TACAN	FIELD ELEVATION
288.20 MHz	240.10 122.10	339.85 130.075	377.8	AKR 107X	75 [ft] 23 [m]

ATIS

288.20

AKROTIRI GROUND

240.10

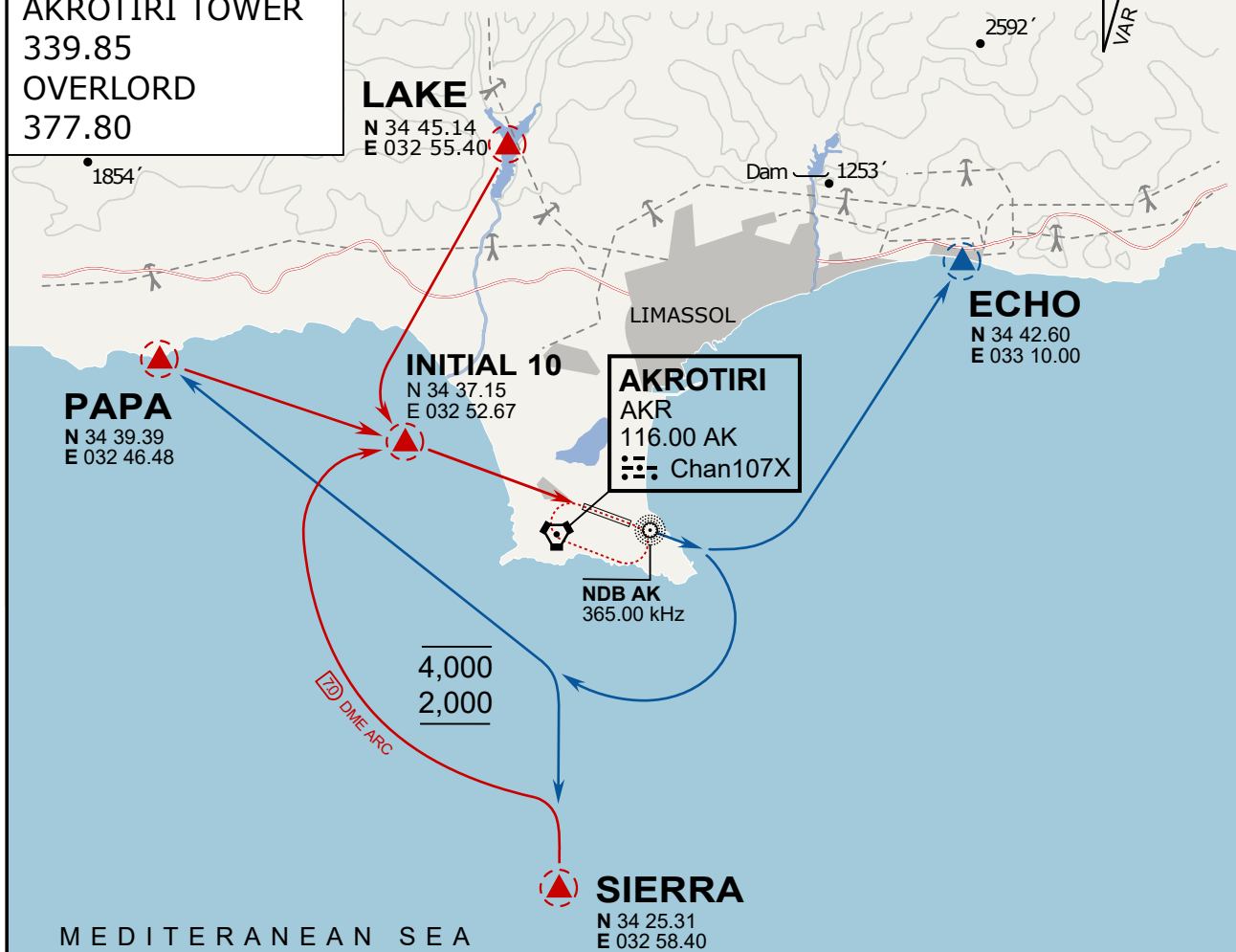
AKROTIRI TOWER

339.85

OVERLORD

377.80

NOT FOR CIVIL USE

CAUTION: If unable to comply
with restrictions advise ATC
prior to departure.

ARR / DEP ROUTE DESCRIPTION

ARRIVAL GENERAL

Pass Entry at 5.000' or below. Overhead Brake RWY 10: pass INITIAL 10 at 2.000' MSL.
Straight-in RWY 10 : pass INITIAL 1.500' or below.

ARR RWY10 PAPA / LAKE: Direct initial.

ARR RWY10 SIERRA: Intercept ARC 7 of AKR to INITIAL 10.

ARR ECHO: no ENTRY.

DEPARTURE GENERAL

Pass Departure end of runway at 1.000' AGL or below. Keep RWY heading until coastline.

DEP RWY10 ECHO: Direct EXIT.

DEP RWY10 SIERRA: Climbing right turn, intercept R180 AKR to Sierra.

DEP RWY10 PAPA: Climbing right turn until R180 AKR, then direct Papa

DEP LAKE: no EXIT.

ATIS

288.20

AKROTIRI GROUND

240.10

AKROTIRI TOWER

339.85

OVERLORD

377.80

NOT FOR CIVIL USE

CAUTION: If unable to comply with restrictions advise ATC prior to departure.



ARR / DEP ROUTE DESCRIPTION

ARRIVAL GENERAL

Pass Entry at 5.000' or below. Overhead Brake RWY 10: pass INITIAL 10 at 2.000' MSL.
Straight-in RWY 10 : pass INITIAL 1.500' or below.

ARR RWY10 PAPA / LAKE: Direct initial.

ARR RWY10 SIERRA: Intercept ARC 7 of AKR to INITIAL 10.

ARR ECHO: no ENTRY.

DEPARTURE GENERAL

Pass Departure end of runway at 1.000' AGL or below. Keep RWY heading until coastline.

DEP RWY10 ECHO: Direct EXIT.

DEP RWY10 SIERRA: Climbing right turn, intercept R180 AKR to Sierra.

DEP RWY10 PAPA: Climbing right turn until R180 AKR, then direct Papa

DEP LAKE: no EXIT.

NOT AVAILABLE

NOT AVAILABLE