

MISSION DATA CARD

OPORD		Callsign		Mission		Date/Time		
1268/2022		T-Rex 2		Training		091600OCT22		
Task	Scramble / JDAM					Freq		
AO	Arkamas Bomb Range					132.25		
Departure				Recovery				
RWY28 VFR				RWY10 VFR				
#	Callsign		Pilot		IFF	TCN	LSR	NET
-1	T-Rex 2-1		Thunder		1521	27Y	1651	25/01

LOADOUT

A/A	A9L				GUN	100% CM	
A/G	2xG54, G10, 7M282L				CHF	120	
POD	TGP, A184				FLR	360	
TKS					FUEL	70%	

TOLD

	Takeoff	Target	Joker	Bingo	Land
FUEL	7760			1500	

AIRBASES

	Name	TCN	ATIS	GND	TWR	RWY	Elev	ILS
Dep	Akrotiri AFB	107X	288.2	240.1	339.85	28	62	109.7
Arr	Akrotiri AFB	107X	288.2	240.1	339.85	28	62	109.7

COMMS

Radio	Usage
1	132.15
2	2-3-4-16-2-4-3

OTHER FLIGHTS

Callsign	Mission	Airframe	Freq	TCN	Grpld	Laser
Cougar	Training	1x F-16C	261.25	21/84		156X
AO		Task				

RADIO CHANNELS

#	Freq	Name
1		Flight/Squadron specific
2	288.2	Akrotiri ATIS
3	240.1	Akrotiri Ground
4	339.85	Aktrotiri Tower
5	335.05	Akrotiri Approach
6	360.1	Incirlik Tower
7	371.35	Incirlik Ground
8	377.475	Incirlik ATIS
9		No Preset
10	127.3	Paphos ATIS
11	353.8	Paphos Tower
12	304.0	CVN-73 George Washington
13	302.0	LHA-1 Tarawa
14	259.0	CV-59 Forrestal
15		No Preset
16	377.8	Overlord
17	265.0	KC-135 Texaco-1 medium/slow
18	319.8	KC-135 Arco-1
19	360.8	KC-135MPRS Arco-2
20	256.0	S-3B Recovery Tanker

RAMROD

0	1	2	3	4	5	6	7	8	9
P	A	T	H	F	I	N	D	E	R

KTC 1400 C

	0	1	2	3	4	5	6	7	8	9
A	YRHV	QAL	TEN	DU	JC	BFO	KS	WP	GX	MI
B	RXDF	SMI	LUP	EW	GV	CAK	QY	OT	BN	JH
C	RLAM	DHF	PUB	VJ	ES	WYI	OC	GQ	TK	XN
D	NOSY	TCV	FJA	ML	IP	KRX	UB	HE	WG	DQ
E	FJCR	AVE	QIP	LS	NK	XMU	BG	DT	OW	HY
F	BHJW	KMS	LND	CY	FV	ARI	ET	PQ	GX	UO
G	LVFA	KOI	GQM	SC	TR	WEB	XD	PY	NJ	HU
H	PRLK	YDJ	MBI	XO	TA	UWC	QH	EF	NG	VS
I	YANC	UVR	KMX	QH	TG	OBD	PF	JL	EI	WS
J	AQXJ	CTK	YIS	BV	GE	RUM	ND	WP	OF	LH
K	BIAO	TED	MSK	HQ	FR	YWV	NU	LP	XC	JG
L	QIVG	TJH	OUN	ME	KD	BAW	XP	RL	FC	YS
M	WOKN	FGL	XSV	RC	QH	PYI	JU	ED	MA	BT
N	YRQN	LKV	MHE	AP	JO	XSU	GT	BI	CW	DF
O	CJAO	EGR	VWF	LD	XB	UPH	IK	TN	MY	SQ
P	EOFB	YNH	MST	QA	KU	XDW	PR	VL	JI	GC
Q	JQKW	IRA	XCB	LE	UG	FOS	HM	YT	NV	DP
R	GQOJ	BVA	KCD	LI	SP	WHR	YT	MU	XN	EF
S	LJCA	EUP	VRM	SN	WO	XFD	TK	BQ	IY	HG
T	XESH	CYI	OGP	UD	TW	KBA	NM	LV	RQ	JF
U	RFTW	LCD	MHN	UQ	BV	SJX	AO	KI	EY	PG
V	URYM	CXP	LGQ	AO	SK	IND	EW	BV	JF	TH
W	HBQY	INJ	PVG	AS	XF	UMT	OD	EW	RL	KC
X	YMOA	EPS	NIV	JL	HF	WGX	RD	KB	QC	TU
Y	IWVQ	CRU	GOD	BN	YM	TPA	KS	EF	XL	HJ

NAVAIDS

Id	Name	Channel	Position	Elevation
DAN	Incirlik	21	N37 00.950 E035 26.883	243
AKR	Akrotiri	107	N34 34.765 E032 57.769	147
PHA	Paphos	79	N34 42.997 E032 28.963	35
RMD	Ramat David	84	N32 39.892 E035 11.265	136

**FOR DCS
 USE ONLY**

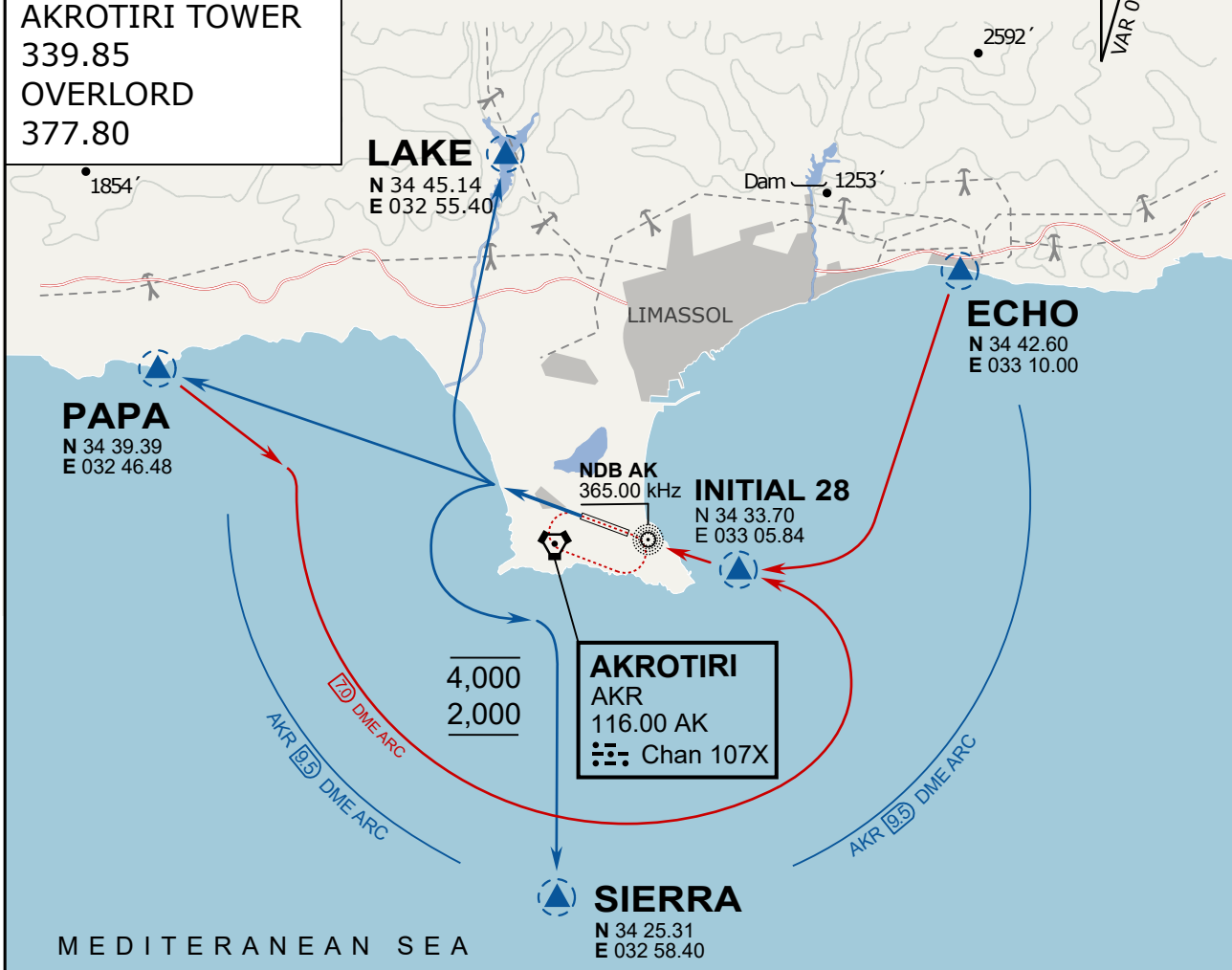


ATIS	AKROTIRI GND	AKROTIRI TWR	OVERLORD CONTROL	TACAN	FIELD ELEVATION
288.20 MHz	240.10 122.10	339.85 130.075	377.8	AKR 107X	75 [ft] 23 [m]

ATIS
 288.20
AKROTIRI GROUND
 240.10
AKROTIRI TOWER
 339.85
OVERLORD
 377.80

NOT FOR CIVIL USE

CAUTION: If unable to comply with restrictions advise ATC prior to departure.



ARR / DEP ROUTE DESCRIPTION

STRAIGHT-IN RWY28

Pass ENTRY at 5.000' MSL or below, pass INITIAL at 1.500' MSL or below.

OVERHEAD BREAK RWY28

Pass ENTRY at 5.000' MSL or below, pass INITIAL at 2.000' MSL, break to the south.

DEPARTURE GENERAL

Pass Departure end of runway at 1.000' or below.

DEP RWY28 PAPA: Fly straight ahead to exit.

DEP RWY28 LAKE: Fly straight ahead until coast, than right turn direct exit.

DEP RWY28 SIERRA: Fly straight ahead until coastline, then climbing left turn, intercept AKR R-180 to exit.

DEP ECHO: no exit.

ATIS

288.20

AKROTIRI GROUND

240.10

AKROTIRI TOWER

339.85

OVERLORD

377.80

NOT FOR CIVIL USE

CAUTION: If unable to comply
with restrictions advise ATC
prior to departure.

ARR / DEP ROUTE DESCRIPTION

ARRIVAL GENERAL

Pass Entry at 5.000' or below. Overhead Brake RWY 10: pass INITIAL 10 at 2.000' MSL.
Straight-in RWY 10 : pass INITIAL 1.500' or below.

ARR RWY10 PAPA / LAKE: Direct initial.

ARR RWY10 SIERRA: Intercept ARC 7 of AKR to INITIAL 10.

ARR ECHO: no ENTRY.

DEPARTURE GENERAL

Pass Departure end of runway at 1.000' AGL or below. Keep RWY heading until coastline.

DEP RWY10 ECHO: Direct EXIT.

DEP RWY10 SIERRA: Climbing right turn, intercept R180 AKR to Sierra.

DEP RWY10 PAPA: Climbing right turn until R180 AKR, then direct Papa

DEP LAKE: no EXIT.