

**MISSION DATA CARD**

OPORD		Callsign		Mission		Date/Time		
1251/2022		Panther 3		Strike		272000OCT22		
Task	ATO303					Freq		
AO						261.35		
Departure				Recovery				
CAT				CASE I				
#	Callsign		Pilot		IFF	TCN	LSR	NET
-1	Panther 3-1		PixelFace		1231	21Y	1561	
-2	Panther 3-2		Razorback		1232	84Y	1562	

**LOADOUT**

A/A	2xA9X, 5xA120C				GUN	100% SAPHEI
A/G	2xG10				CHF	70
POD	TGP				FLR	50
TKS	FPU-8A				FUEL	100%

**TOLD**

	Takeoff	Target	Joker	Bingo	Land
FUEL	13047				

**AIRBASES**

	Name	TCN	ATIS	GND	TWR	RWY	Elev	ILS
Dep	CVN-73 USS G. Washington	55X		ICLS 12	304.0			
Arr	CVN-73 USS G. Washington	55X		ICLS 12	304.0			
Div	Akrotiri AFB	107X	288.2	240.1	339.85	28	62	109.7

**FLIGHTPLAN**

#	Name	Navaid/Coords/DME	ALT	TOT
1	ATO303 NW	N34 45 53.608 E035 11 13.828		
2	ATO303 NE	N34 46.186 E035 36.238		
3	ATO303 SE	N34 30.600 E035 36.667	0	
4	ATO303 SW	N34 30.163 E035 10.986	0	
5	Bulls	N34 51.500 E035 22.470	0	

**COMMS**

Radio	Usage
1	12(GW), 16(OL), 9(TX2), 16(OL), 20*357.8 (FOCS), 12(GW) / Alternate 4(AT)
2	261.35
3	A 23 / B 44
4	TEXACO 2 278.970(9) / TC92Y; CVN73 304.0(12) / TC 55x, ICLS 12, LINK4 373MHz; Focus 357.8

## NOTES

initial vector 050 ,expect vectors to targets from OVLRD  
nach Abschluß der Harpoons : change of tasking to "intercept"  
push "FOCUS"

primary objective : ship strike,  
secondary : carrier protection/intercept

=====

GBU-10 ist Platzhalter für GBU-24 (!!), CLAR-SL Mode, Laser  
Code:156x, QTY:2, Fuse:N/T

=====

Weather :

Time : 13.09.2022, 5:30 lcl

Clouds : FEW / SCT 13780ft

Wind : 6ft 090/6 , 1600ft 090/14 , 6600ft 090/12 , 26000ft 090/12

QNH 29.91 inHg

====

BE: N 34 51.50 E 035 22.47

====

AWACS North: TYPE: E-3A Sentry

CALLSIGN: OVERLORD- -ALT: 32.000ft- -FRQ: 377.8 AM

AWACS South: TYPE: E-2D Hawkeye

CALLSIGN: FOCUS- -ALT: 32.000ft- - FRQ: 357.8 AM

=====

SPINS : ROE (rules of engagement) : "Weapons free" auf bestätigte  
Gegner

Akrotiri GND Frequency not useable according NOTAM, all traffic use  
Tower Frequency

All flights : after departure and when clear of respective airspace  
check-in on "Overlord", DYRAD-authentication in use

FREQS:

Akrotiri ATIS 288.200 Channel 2

Akrotiri Tower 339.850 Channel 4

Incirlik AFB Tower 360.100 Channel 6

Incirlik AFB Ground 371.350 Channel 7

Incirlik ATIS 377.475 Channel 8

Overlord 377.800 Channel 16

Tacan: Akrotiri 107X -- Incirlik 21X

## OTHER FLIGHTS

Callsign	Mission	Airframe	Freq	TCN	Grpld	Laser
Cougar 1	CAP	4x F-14B	261.25	21/84		156X
AO		Task	ATO301 - Scramble Intercept			
Tiger 3	Strike	4x F/A-18C	261.15	21/84	1	156X
AO		Task	ATO302			
Monster 4	BAI	4x A-10C	132.25	21/84	14	156X
AO		Task	ATO304			
T-Rex 5	BAI	4x A-10C	132.65	21/84	25	156X
AO		Task	ATO305			
Rattler 7	Escort	4x AH-64D	133.5	21/84		156X
AO	Jedi Escort	Task	ATO307			
Raptor 6	CAP	4x F-16C	134.0	21/84		156X
AO		Task	ATO306			
Hawg 2	BAI	4x A-10C	132.55	21/84	30	156X
AO		Task	ATO309			
Jedi* 1	AI	4x UH-1H	133.5	40/103		156X
AO	Spec Ops Insertion	Task	ATO308			

**RADIO CHANNELS**

#	Freq	Name
1		Flight/Squadron specific
2	288.2	Akrotiri ATIS
3	240.1	Akrotiri Ground
4	339.85	Aktrotiri Tower
5	335.05	Akrotiri Approach
6	360.1	Incirlik Tower
7	371.35	Incirlik Ground
8	377.475	Incirlik ATIS
9		No Preset
10	127.3	Paphos ATIS
11	353.8	Paphos Tower
12	304.0	CVN-73 George Washington
13	302.0	LHA-1 Tarawa
14	259.0	CV-59 Forrestal
15		No Preset
16	377.8	Overlord
17	265.0	KC-135 Texaco-1 medium/slow
18	319.8	KC-135 Arco-1
19	360.8	KC-135MPRS Arco-2
20	256.0	S-3B Recovery Tanker

**RAMROD**

0	1	2	3	4	5	6	7	8	9
C	L	A	M	B	E	R	I	N	G

**KTC 1400 C**

	0	1	2	3	4	5	6	7	8	9
A	FVLT	JNP	HEY	GD	OR	MIK	AX	QS	WB	CU
B	EASH	BOF	TGL	VQ	PD	JRC	YK	UN	XI	MW
C	TSQO	MJI	UEW	BH	VN	XDG	AK	RP	FL	YC
D	UMKR	DOW	XVT	JC	BI	QNH	LF	YG	ES	PA
E	IELN	BYW	OGC	MJ	QT	XRF	PH	UA	VS	KD
F	XEBN	HYO	JUM	TR	VA	SPD	CF	GI	QW	KL
G	XUKO	YVE	RAP	MI	HB	FJW	ND	QT	CS	GL
H	DFNA	MLH	TGC	QU	WO	EPX	RI	VK	YS	BJ
I	JEDO	QWM	KGY	SI	VB	CXA	NP	RL	HF	TU
J	RUCD	MKO	GJY	XV	LP	NSQ	BW	AF	EI	TH
K	UHXP	QFB	EAM	GJ	LC	SIW	ND	VK	TR	YO
L	QHBR	AMC	WDK	XG	JN	LSE	UF	PI	TO	YV
M	RFSQ	BWY	OPV	ND	HX	CAM	ET	KU	IJ	GL
N	YPUA	TFG	QKX	IC	JV	LRO	SH	BW	MD	NE
O	YXJV	FHB	UMO	RG	CD	SEQ	NT	PW	IK	AL
P	JSQH	MXO	PFW	UB	VY	NEL	GK	AR	DT	IC
Q	MHCO	FNJ	GXK	VQ	TA	UPL	YR	BW	IE	DS
R	MWVC	KYS	QFU	TA	ER	LNH	PB	XI	DO	GJ
S	REKX	PYH	OGU	JL	SI	NMT	BW	CQ	VF	AD
T	PHLJ	TWR	NOE	MU	KY	DSX	GV	FC	IB	QA
U	YDCV	GMK	BNT	FJ	XO	PWH	AR	QS	IL	UE
V	TEFO	AVI	LMC	WN	DX	UGP	JH	SY	BK	QR
W	OXRV	TML	CEY	QG	FW	BIK	NS	AD	PH	UJ
X	UKXF	JEA	CIQ	HW	NB	VGD	TS	MY	RP	OL
Y	RHSF	JDX	KNY	GQ	WA	BIL	MV	UT	OP	EC

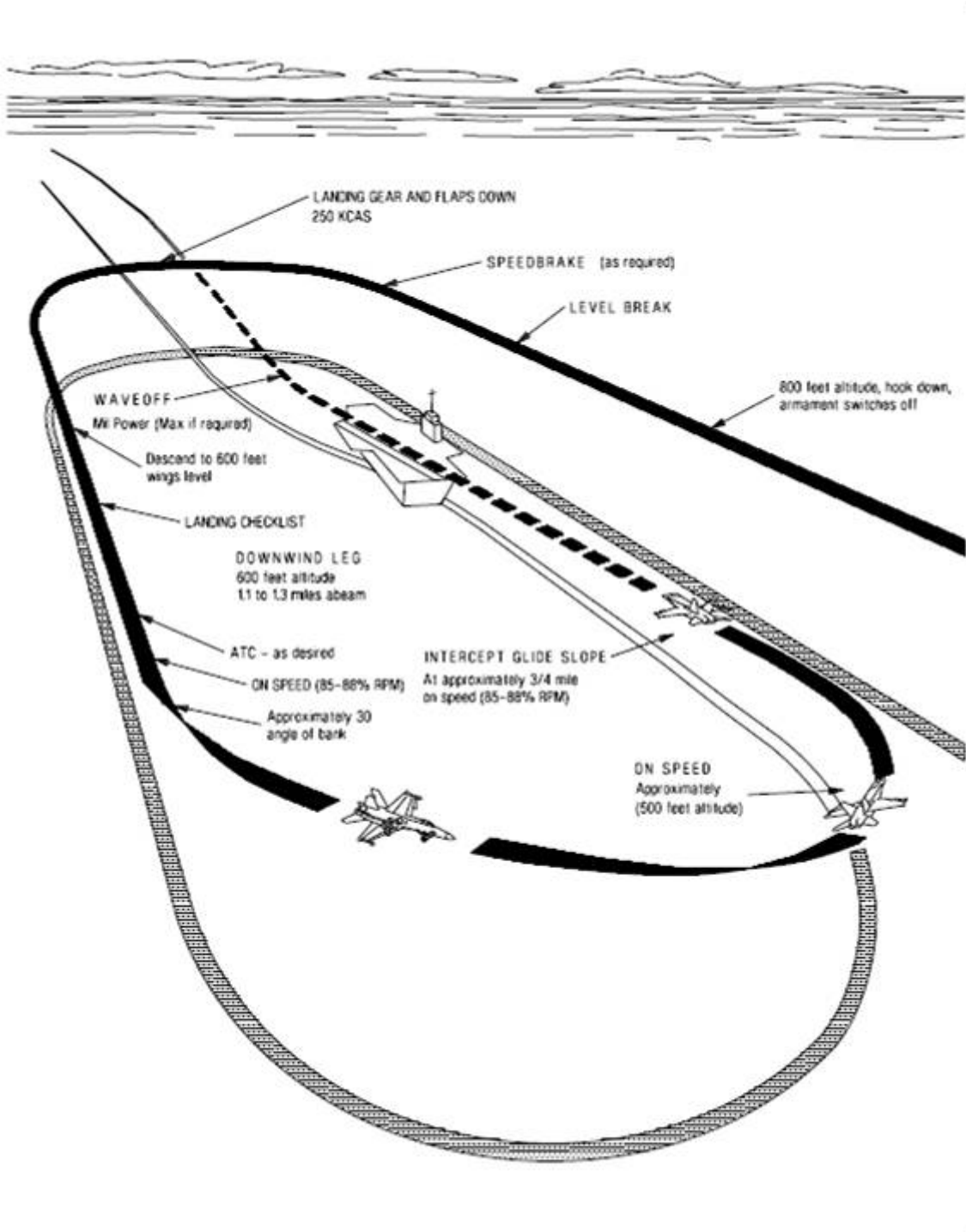
**NAVAIDS**

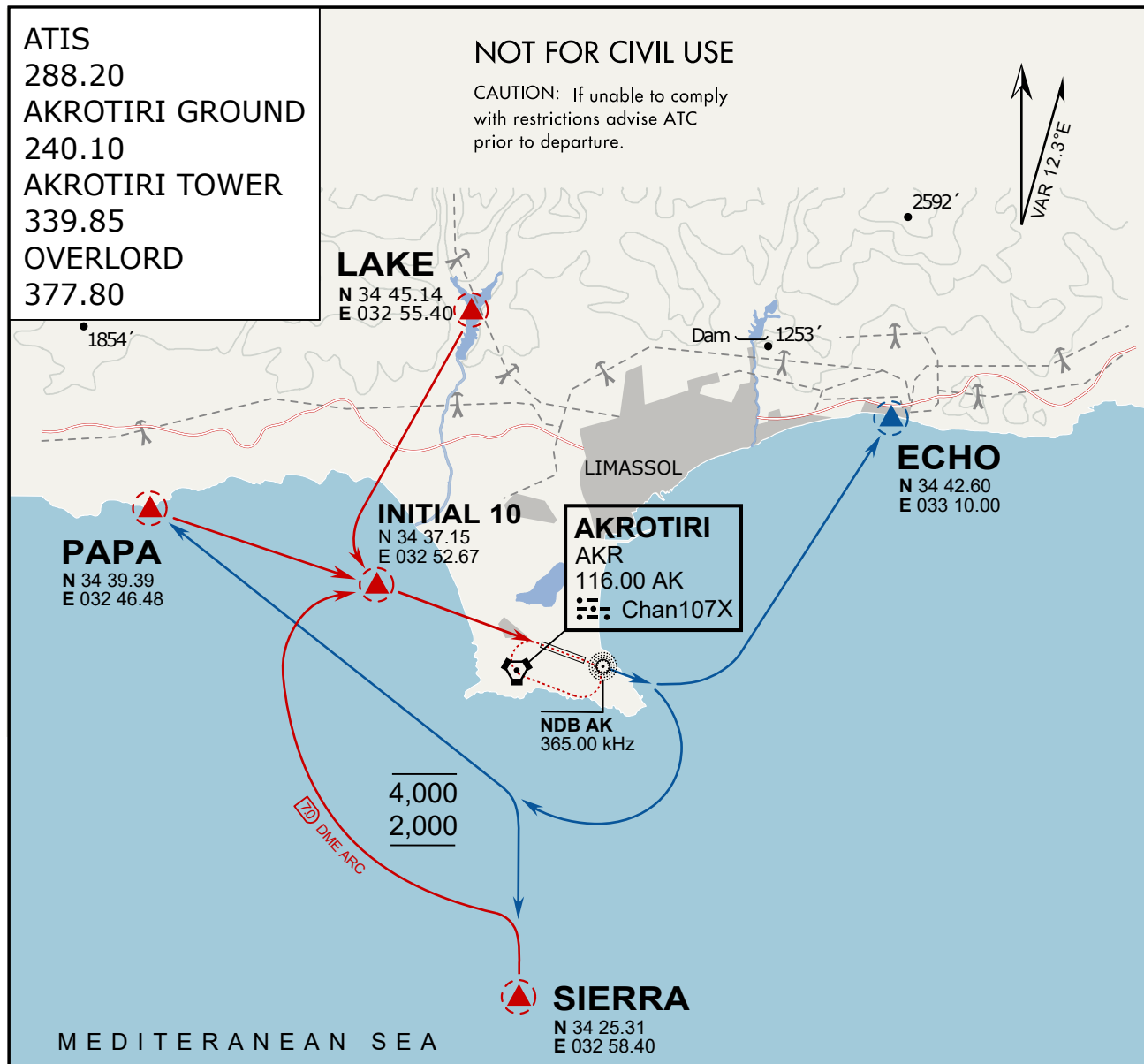
<b>Id</b>	<b>Name</b>	<b>Channel</b>	<b>Position</b>	<b>Elevation</b>
DAN	Incirlik	21	N37 00.950 E035 26.883	243
AKR	Akrotiri	107	N34 34.765 E032 57.769	147
PHA	Paphos	79	N34 42.997 E032 28.963	35
RMD	Ramat David	84	N32 39.892 E035 11.265	136
OS66	Kuweires Military Aviation Institute	36	N36 11.362 E037 34.226	1200











## ARR / DEP ROUTE DESCRIPTION

### ARRIVAL GENERAL

Pass Entry at 5.000' or below. Overhead Brake RWY 10: pass INITIAL 10 at 2.000' MSL.  
Straight-in RWY 10 : pass INITIAL 1.500' or below.

ARR RWY10 PAPA / LAKE: Direct initial.

ARR RWY10 SIERRA: Intercept ARC 7 of AKR to INITIAL 10.

ARR ECHO: no ENTRY.

### DEPARTURE GENERAL

Pass Departure end of runway at 1.000' AGL or below. Keep RWY heading until coastline.

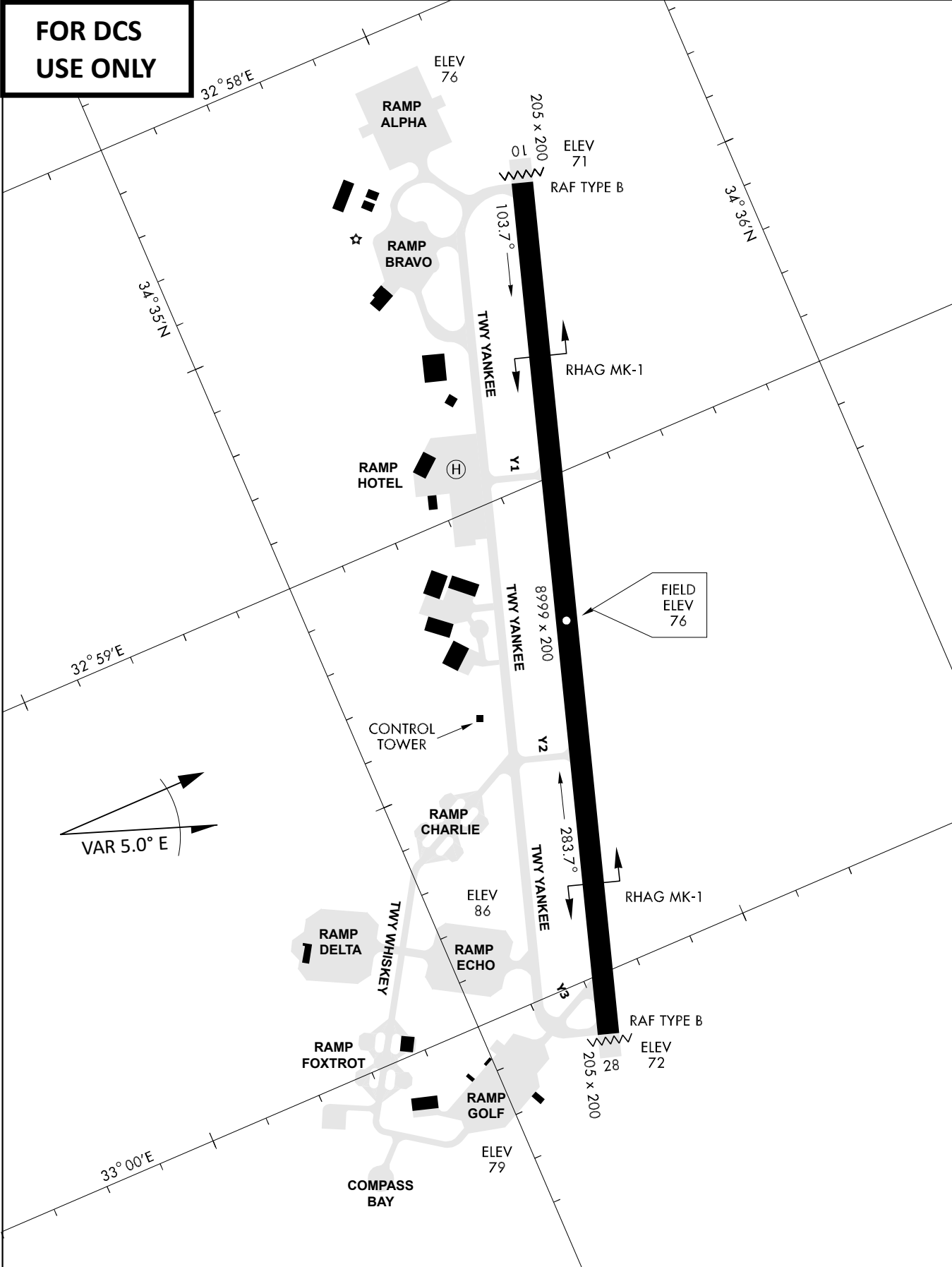
DEP RWY10 ECHO: Direct EXIT.

DEP RWY10 SIERRA: Climbing right turn, intercept R180 AKR to Sierra.

DEP RWY10 PAPA: Climbing right turn until R180 AKR, then direct Papa

DEP LAKE: no EXIT.

**FOR DCS  
 USE ONLY**



ATIS	AKROTIRI GND	AKROTIRI TWR	OVERLORD CONTROL	TACAN	FIELD ELEVATION
288.20 MHz	240.10   122.10	339.85   130.075	377.8	AKR 107X	<b>75 [ft] 23 [m]</b>