

MISSION DATA CARD

OPORD		Callsign		Mission		Date/Time		
1223/2022		Cougar 1		Training		262000SEP22		
Task	BFM Training					Freq		
AO	BFM Training range					261.25		
Departure				Recovery				
RWY28 VFR				RWY28 VFR				
#	Callsign		Pilot		IFF	TCN	LSR	NET
-1	Cougar 1-1		Striver/Lempo		1111	21Y	1561	
-2	Cougar 1-2		Bane		1112	84Y	1562	

LOADOUT

A/A		GUN	
A/G		CHF	
POD		FLR	
TKS		FUEL	

TOLD

	Takeoff	Target	Joker	Bingo	Land
FUEL	16200				

AIRBASES

	Name	TCN	ATIS	GND	TWR	RWY	Elev	ILS
Dep	Akrotiri AFB	107X	288.2	240.1	339.85	28	62	109.7
Arr	Akrotiri AFB	107X	288.2	240.1	339.85	28	62	109.7

OTHER FLIGHTS

Callsign	Mission	Airframe	Freq	TCN	Grpld	Laser
Panther 7	Strike	4x F/A-18C	261.25	21/84		156X
AO	Mission Area	Task	COIN			
Rattler 1	Training	2x AH-64D	133.5	21/84		156X
AO		Task				
Edelweiss 6	Training	3x A-10C	134.65	21/84	40	156X
AO		Task	BJT Training			
Edelweiss 5	Training	1x AV-8B N/A	264.55	21/84		170X
AO	AKAMAS RANGE	Task	LOW LEVEL NAVIGATION			
Edelweiss 6	Training	3x F/A-18C	261.25	21/84		156X
AO	ETTR	Task				
Edelweiss 6	Training	1x F-16C	261.25	21/84	1	156X
AO		Task				

RADIO CHANNELS

#	Freq	Name
1		Flight/Squadron specific
2	288.2	Akrotiri ATIS
3	240.1	Akrotiri Ground
4	339.85	Aktrotiri Tower
5	335.05	Akrotiri Approach
6	360.1	Incirlik Tower
7	371.35	Incirlik Ground
8	377.475	Incirlik ATIS
9		No Preset
10	127.3	Paphos ATIS
11	353.8	Paphos Tower
12	304.0	CVN-73 George Washington
13	302.0	LHA-1 Tarawa
14	259.0	CV-59 Forrestal
15		No Preset
16	377.8	Overlord
17	265.0	KC-135 Texaco-1 medium/slow
18	319.8	KC-135 Arco-1
19	360.8	KC-135MPRS Arco-2
20	256.0	S-3B Recovery Tanker

RAMROD

0	1	2	3	4	5	6	7	8	9
D	E	P	I	L	A	T	O	R	Y

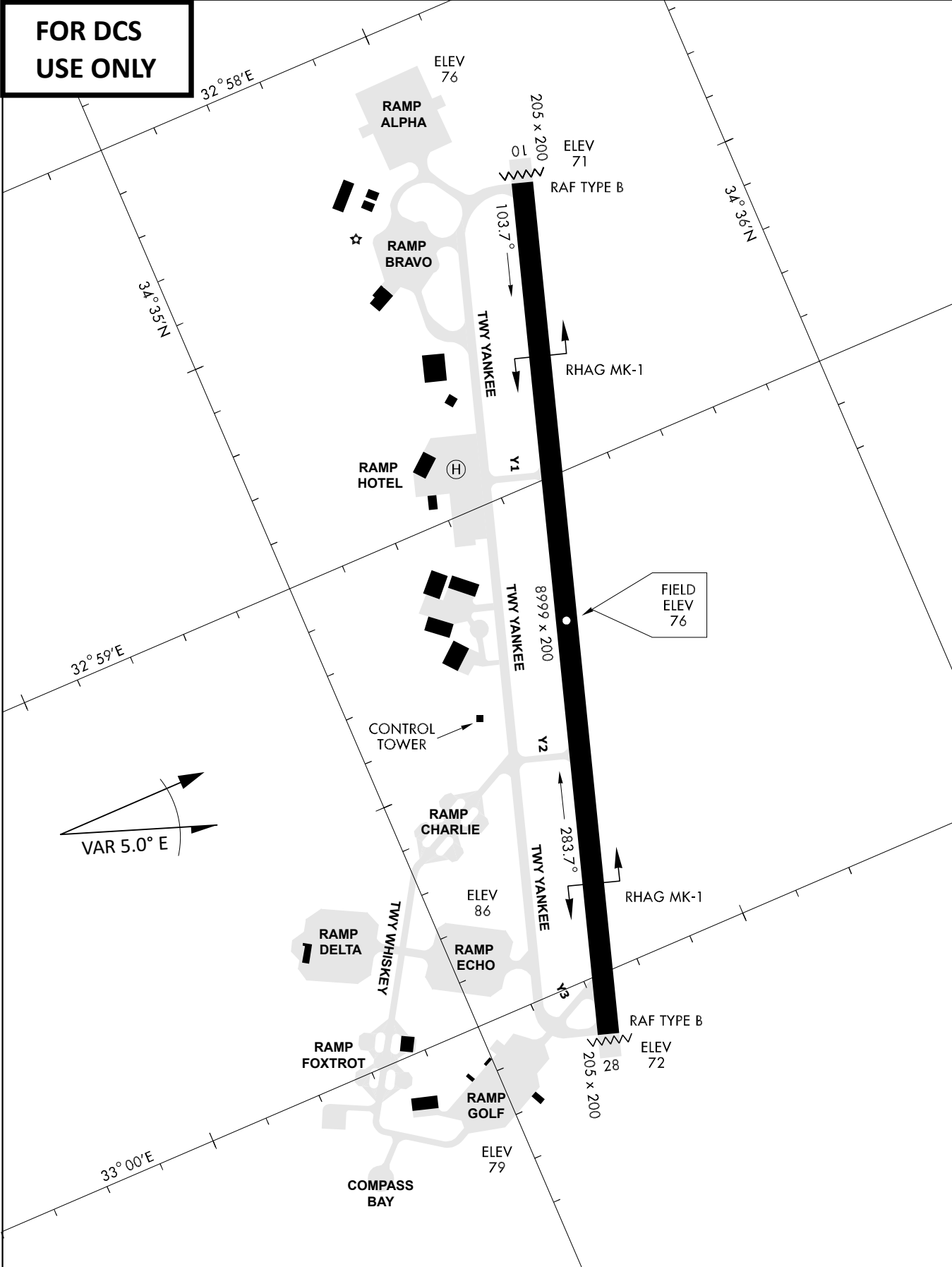
KTC 1400 C

	0	1	2	3	4	5	6	7	8	9
A	TEVN	ODF	JMA	PL	RQ	YIK	WH	CU	SB	GX
B	WQIS	VAM	RXF	DB	JU	YPO	ET	GC	LK	HN
C	BIMH	ENK	VCY	PW	TX	SUR	QA	LO	JD	FG
D	YAIL	WKF	DMU	JX	PS	RCV	QH	GN	BT	OE
E	AUFN	TQL	DKS	EY	CJ	WHG	MO	BV	RI	PX
F	YFMN	QTI	DAJ	OK	RB	PWC	GS	EX	VU	HL
G	PBSU	ITH	YCN	QA	MF	RDE	JL	VW	GO	KX
H	ONJV	ICH	UBX	QP	GW	ATF	YK	RL	MD	SE
I	IQWK	CPS	TDO	EF	LM	HGB	RX	YU	VJ	AN
J	GKEL	SCX	RBJ	IP	FM	HTW	VU	YA	ON	QD
K	LJHG	ICY	TNF	KQ	PS	XWM	VD	OE	UB	RA
L	WULF	NBE	YIK	DX	MQ	RVO	HC	PA	SJ	GT
M	JADE	GFO	LBC	TS	RY	NVH	WU	MP	KQ	IX
N	YJAP	RDM	WCU	VN	HX	TOE	LS	BG	KI	FQ
O	BAHP	OSK	LVI	EU	WQ	FCY	TX	JR	NM	GD
P	LIQG	BVM	UFN	DS	XC	OKP	HR	YE	JA	TW
Q	VYHA	GIW	JFE	OL	UQ	RNX	TS	DB	MC	KP
R	NSDX	UTG	VPL	BK	YW	ERH	OM	FI	JQ	AC
S	JVRB	TSA	PDL	GW	CN	FYI	ME	UX	QH	KO
T	NXSA	TMP	WUQ	RF	LH	EBG	KD	YV	OC	JI
U	CBKN	LMQ	JTY	HI	AR	DFU	EO	VW	GP	XS
V	MIHW	GCP	NSQ	BO	JU	XDY	TV	RA	EL	FK
W	YTUD	GCN	LIO	SK	QX	WRV	HM	FJ	EA	PB
X	AGYX	MNJ	WHB	SL	IR	DKV	UE	FT	OQ	PC
Y	BMGP	OKE	XLU	JW	DH	QST	AF	IN	VC	YR

NAVAIDS

Id	Name	Channel	Position	Elevation
DAN	Incirlik	21	N37 00.950 E035 26.883	243
AKR	Akrotiri	107	N34 34.765 E032 57.769	147
PHA	Paphos	79	N34 42.997 E032 28.963	35
RMD	Ramat David	84	N32 39.892 E035 11.265	136
OS66	Kuweires Military Aviation Institute	36	N36 11.362 E037 34.226	1200

**FOR DCS
 USE ONLY**

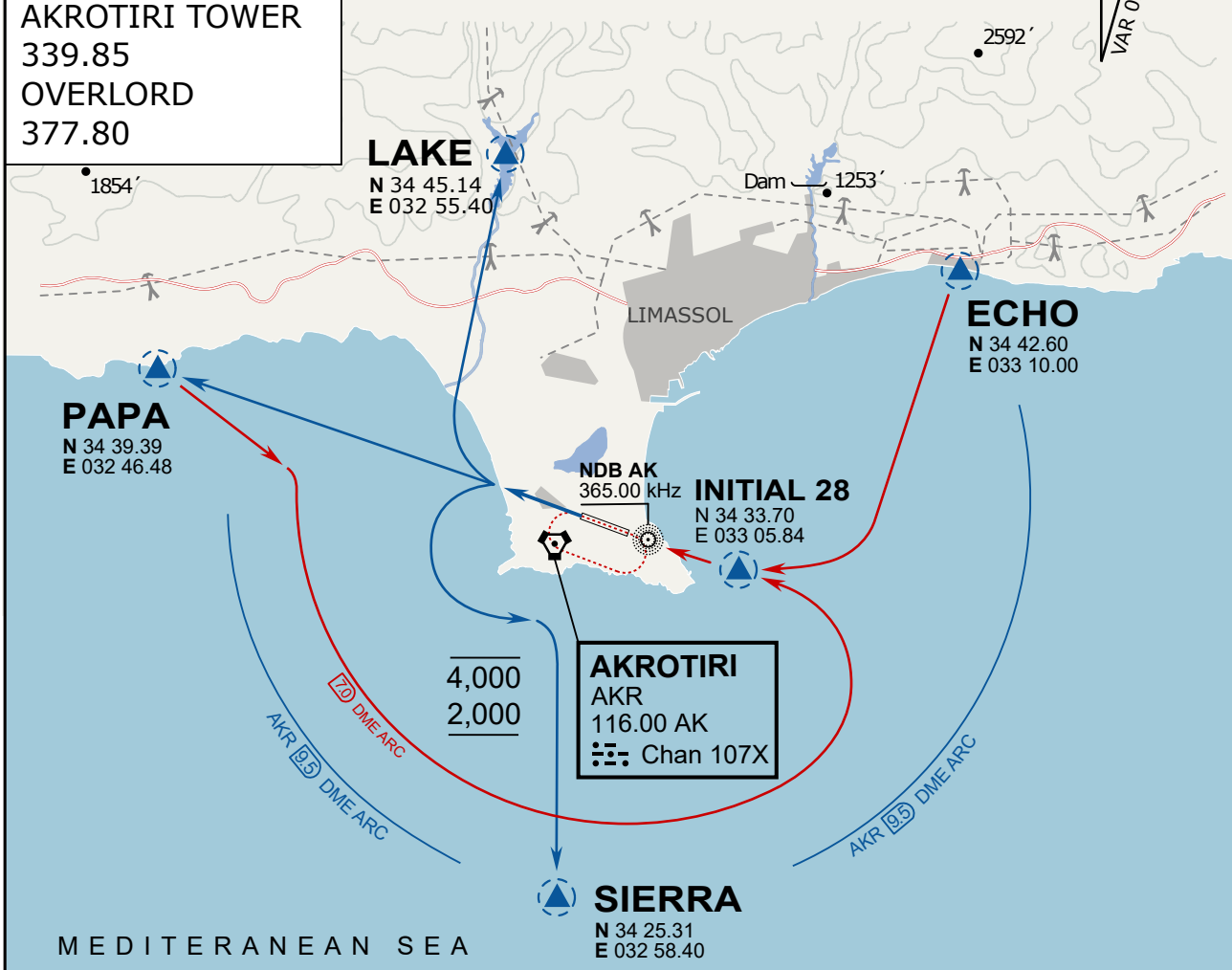


ATIS	AKROTIRI GND	AKROTIRI TWR	OVERLORD CONTROL	TACAN	FIELD ELEVATION
288.20 MHz	240.10 122.10	339.85 130.075	377.8	AKR 107X	75 [ft] 23 [m]

ATIS
 288.20
AKROTIRI GROUND
 240.10
AKROTIRI TOWER
 339.85
OVERLORD
 377.80

NOT FOR CIVIL USE

CAUTION: If unable to comply with restrictions advise ATC prior to departure.



ARR / DEP ROUTE DESCRIPTION

STRAIGHT-IN RWY28

Pass ENTRY at 5.000' MSL or below, pass INITIAL at 1.500' MSL or below.

OVERHEAD BREAK RWY28

Pass ENTRY at 5.000' MSL or below, pass INITIAL at 2.000' MSL, break to the south.

DEPARTURE GENERAL

Pass Departure end of runway at 1.000' or below.

DEP RWY28 PAPA: Fly straight ahead to exit.

DEP RWY28 LAKE: Fly straight ahead until coast, than right turn direct exit.

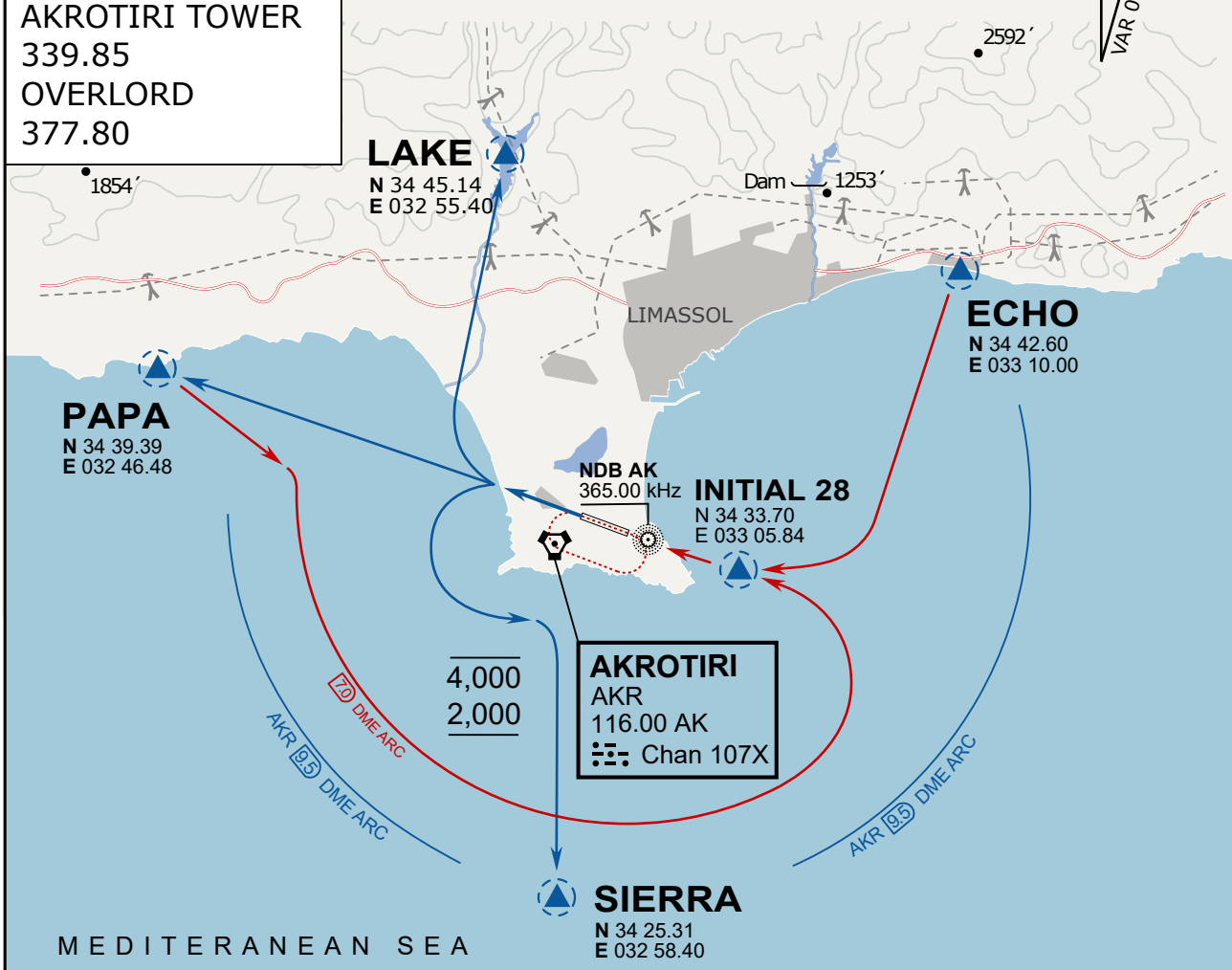
DEP RWY28 SIERRA: Fly straight ahead until coastline, then climbing left turn, intercept AKR R-180 to exit.

DEP ECHO: no exit.

ATIS
 288.20
AKROTIRI GROUND
 240.10
AKROTIRI TOWER
 339.85
OVERLORD
 377.80

NOT FOR CIVIL USE

CAUTION: If unable to comply with restrictions advise ATC prior to departure.



ARR / DEP ROUTE DESCRIPTION

STRAIGHT-IN RWY28

Pass ENTRY at 5.000' MSL or below, pass INITIAL at 1.500' MSL or below.

OVERHEAD BREAK RWY28

Pass ENTRY at 5.000' MSL or below, pass INITIAL at 2.000' MSL, break to the south.

DEPARTURE GENERAL

Pass Departure end of runway at 1.000' or below.

DEP RWY28 PAPA: Fly straight ahead to exit.

DEP RWY28 LAKE: Fly straight ahead until coast, than right turn direct exit.

DEP RWY28 SIERRA: Fly straight ahead until coastline, then climbing left turn, intercept AKR R-180 to exit.

DEP ECHO: no exit.