

MISSION DATA CARD

OPORD		Callsign		Mission		Date/Time		
1173/2022		Tiger 1		Training		122000SEP22		
Task	A/G RADAR Training					Freq		
AO	GMT-Range Cyprus					261.15		
Departure				Recovery				
CAT				CASE I				
#	Callsign		Pilot		IFF	TCN	LSR	NET
-1	Tiger 1-1		Ghost		1011	21Y	1561	01/01
-2	Tiger 1-2		Retai		1012	84Y	1562	01/02
-3	Tiger 1-3		Laud		1013	84X	1563	01/03
-4	Tiger 1-4		Jemi		1014	21X	1564	01/04

LOADOUT

A/A	A9X, A120C				GUN	100% HEI-T	
A/G	2xA65F, 2xG16				CHF	30	
POD	TGP, AT50				FLR	90	
TKS	FPU-8A				FUEL	100%	

TOLD

	Takeoff	Target	Joker	Bingo	Land
FUEL	13047				

AIRBASES

	Name	TCN	ATIS	GND	TWR	RWY	Elev	ILS
Dep	CVN-73 USS G. Washington	55X		ICLS 12	304.0			
Arr	CVN-73 USS G. Washington	55X		ICLS 12	304.0			
Div	Akrotiri AFB	107X	288.2	240.1	339.85	28	62	109.7

FLIGHTPLAN

#	Name	Navaid/Coords/DME	ALT	TOT
1	AKT	N34 35 29.122 E032 59 19.239	20000	
2	IP	N34 59 51.097 E033 27 44.982	20000	
3	TGT Area	N35 03 18.171 E033 37 15.104	20000	
4	Alternate AKT	N34 35 29.145 E032 59 19.700	20000	
5	5	N33 47 24.682 E032 40 25.569	0	

COMMS

Radio	Usage
1	12(GW), 16(OL), 19(AC2), 16(OL), 12(GW) / Alternate 4(AT)
2	Inhouse 261.15
3	A 22 / B 44
4	ARCO 2 360.8(19) / TC41Y, CVN73 304.0(12) / TC 55x, ICLS 12, LINK4 373MHz

SUPPORT**Tanker**

Callsign	TCN	Freq	ALT	TAS
ARCO 2	41Y	360.8	FL220	400
	Pos	ARCO2: (N3653 E03452)		

AWACS

Callsign	Freq	ALT	Pos
OVERLORD2	377.8	FL320	N3713 E03643 - N3714 E03749

OTHER FLIGHTS

Callsign	Mission	Airframe	Freq	TCN	Grpld	Laser
Edelweiss 6	Training	1x A-10C	134.65	21/84	40	166X
AO		Task	BJT Airmanuvers			
Vanguard 5	Training	4x AH-64D	133.5	21/84		133X
AO	Insurgent Town Range	Task	gun & attack pattern			
Raptor 1	Training	4x F-16C	134.25	21/84		156X
AO	BVR Range	Task	BVR Training			
Cougar 1	CAP	4x F-14B	261.25	21/84		156X
AO	Sterile BVR Range	Task	BVR Training			

RADIO CHANNELS

#	Freq	Name
1		Flight/Squadron specific
2	288.2	Akrotiri ATIS
3	240.1	Akrotiri Ground
4	339.85	Aktrotiri Tower
5	335.05	Akrotiri Approach
6	360.1	Incirlik Tower
7	371.35	Incirlik Ground
8	377.475	Incirlik ATIS
9		No Preset
10	127.3	Paphos ATIS
11	353.8	Paphos Tower
12	304.0	CVN-73 George Washington
13	302.0	LHA-1 Tarawa
14	259.0	CV-59 Forrestal
15		No Preset
16	377.8	Overlord
17	265.0	KC-135 Texaco-1 medium/slow
18	319.8	KC-135 Arco-1
19	360.8	KC-135MPRS Arco-2
20	256.0	S-3B Recovery Tanker

RAMROD

0	1	2	3	4	5	6	7	8	9
V	O	U	C	H	S	A	F	E	D

KTC 1400 C

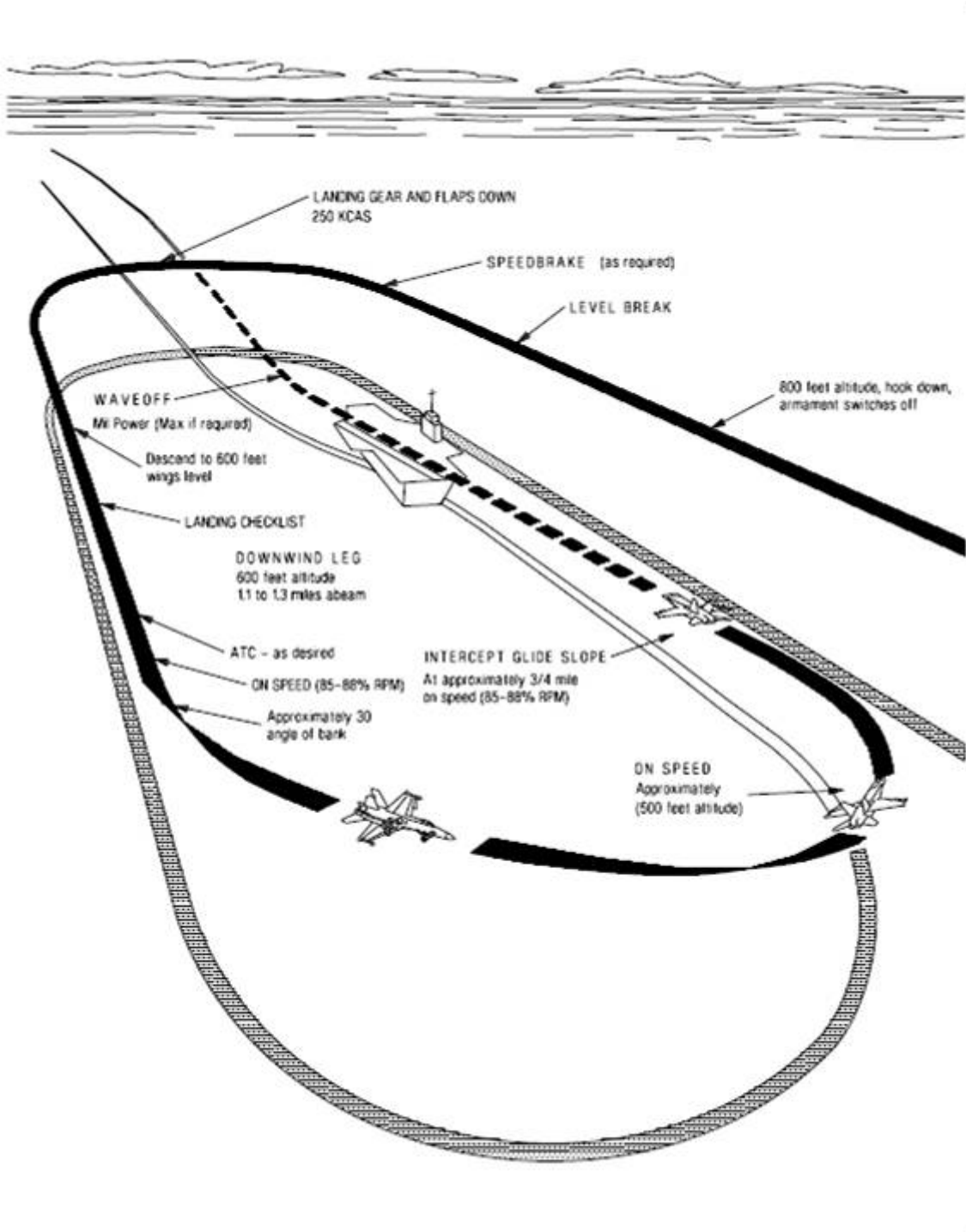
	0	1	2	3	4	5	6	7	8	9
A	GWNT	MPO	QIH	VB	LD	UCK	YR	AJ	XF	ES
B	JYLP	WFH	CTG	AN	ED	MKQ	BI	OV	RX	SU
C	NVYX	LOR	WSA	MT	KG	QCF	PJ	DB	HI	EU
D	KHFL	QOG	YND	RE	SI	XMW	PA	TB	UV	JC
E	AJBV	XFE	WRQ	GI	HP	DUT	KL	MY	ON	SC
F	JXKG	MPO	EVF	CH	YI	ULR	DB	NT	WS	AQ
G	IHLJ	NVM	CSE	BD	RF	WUG	YP	KT	XA	OQ
H	HRJK	TON	XYQ	CI	AE	PSB	MV	UG	WD	FL
I	QFAT	GHR	USM	VI	WN	XCO	DL	BP	YK	EJ
J	CFQP	KAJ	BDT	EO	NV	RSU	GM	HL	IY	WX
K	REDQ	GLN	SPH	OK	MV	WCT	UB	XY	FI	AJ
L	UVCK	AOP	HLM	DT	FS	RNE	QI	JX	GB	WY
M	AUKI	ELM	XBV	GJ	CQ	FOS	PN	TR	WD	HY
N	VMKT	DRO	QAL	SY	GC	JWN	IP	HU	EX	BF
O	UMVF	LKW	QSC	IR	AH	NEG	OX	TP	YD	JB
P	JGNY	VDX	HUF	CO	QT	MKI	ER	BL	SW	PA
Q	HCKJ	WUE	LMA	GI	PS	ODX	NV	BQ	FT	RY
R	UPLK	TBI	VFG	XM	OJ	RSH	DE	NA	WQ	YC
S	ONTK	XSY	CAL	UW	IJ	BDR	MQ	VF	GH	EP
T	VQME	XPK	ANU	CY	GI	TBW	HS	DO	LJ	RF
U	JCPM	UTV	WBQ	KL	FI	EOA	DX	NY	SR	HG
V	PVXI	TCE	GAQ	JD	NR	MBS	HU	OW	FK	LY
W	IJYS	AVC	EWB	XO	RN	DMP	FG	TB	UQ	LK
X	WYMB	KGU	PCO	AI	SL	HTN	FE	QV	XJ	RD
Y	RJUM	AGW	QDB	YS	VN	HEK	CT	FL	IO	XP

NAVAIDS

Id	Name	Channel	Position	Elevation
DAN	Incirlik	21	N37 00.950 E035 26.883	243
AKR	Akrotiri	107	N34 34.765 E032 57.769	147
PHA	Paphos	79	N34 42.997 E032 28.963	35
RMD	Ramat David	84	N32 39.892 E035 11.265	136
OS66	Kuweires Military Aviation Institute	36	N36 11.362 E037 34.226	1200



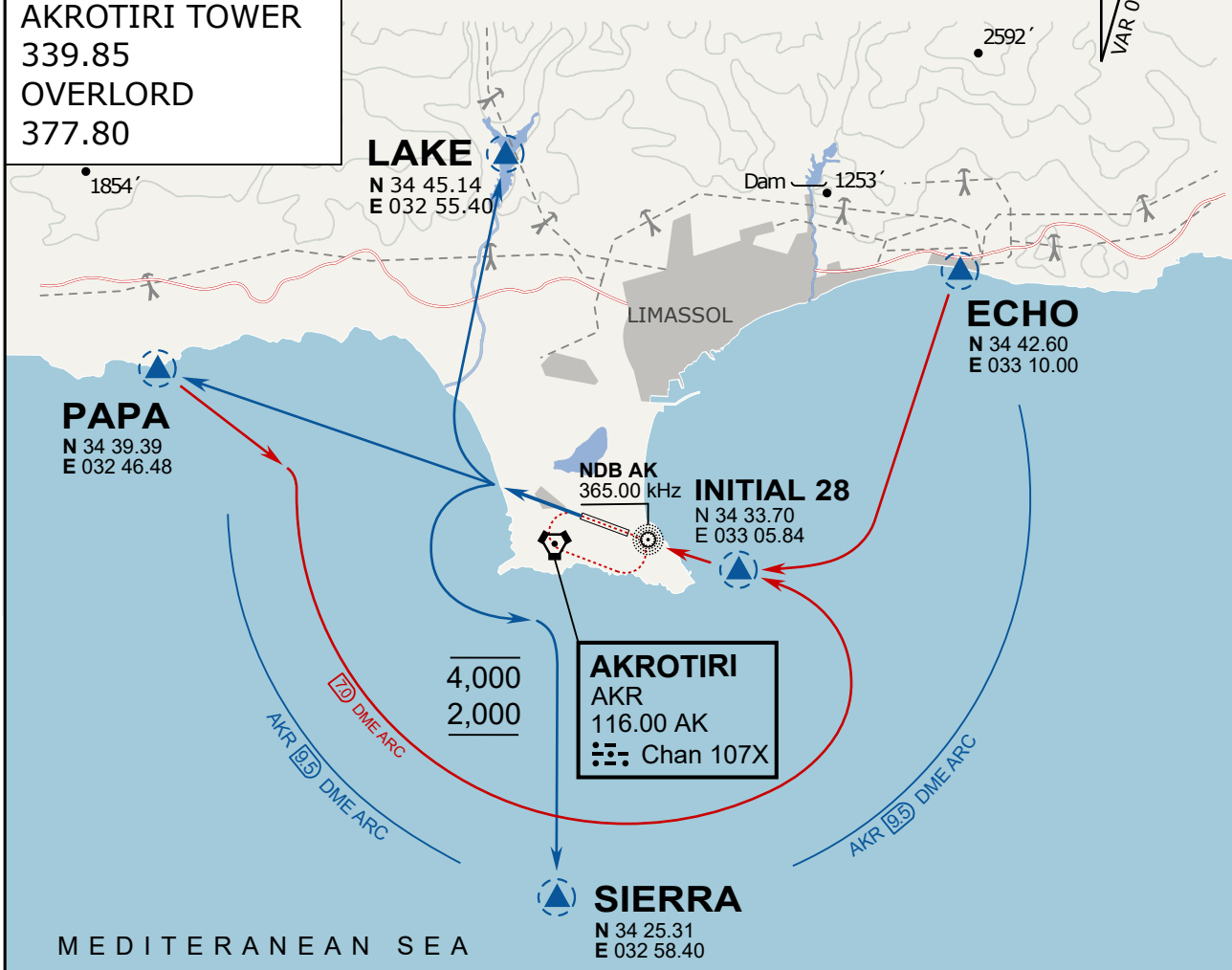




ATIS
 288.20
AKROTIRI GROUND
 240.10
AKROTIRI TOWER
 339.85
OVERLORD
 377.80

NOT FOR CIVIL USE

CAUTION: If unable to comply
 with restrictions advise ATC
 prior to departure.



ARR / DEP ROUTE DESCRIPTION

STRAIGHT-IN RWY28

Pass ENTRY at 5.000' MSL or below, pass INITIAL at 1.500' MSL or below.

OVERHEAD BREAK RWY28

Pass ENTRY at 5.000' MSL or below, pass INITIAL at 2.000' MSL, break to the south.

DEPARTURE GENERAL

Pass Departure end of runway at 1.000' or below.

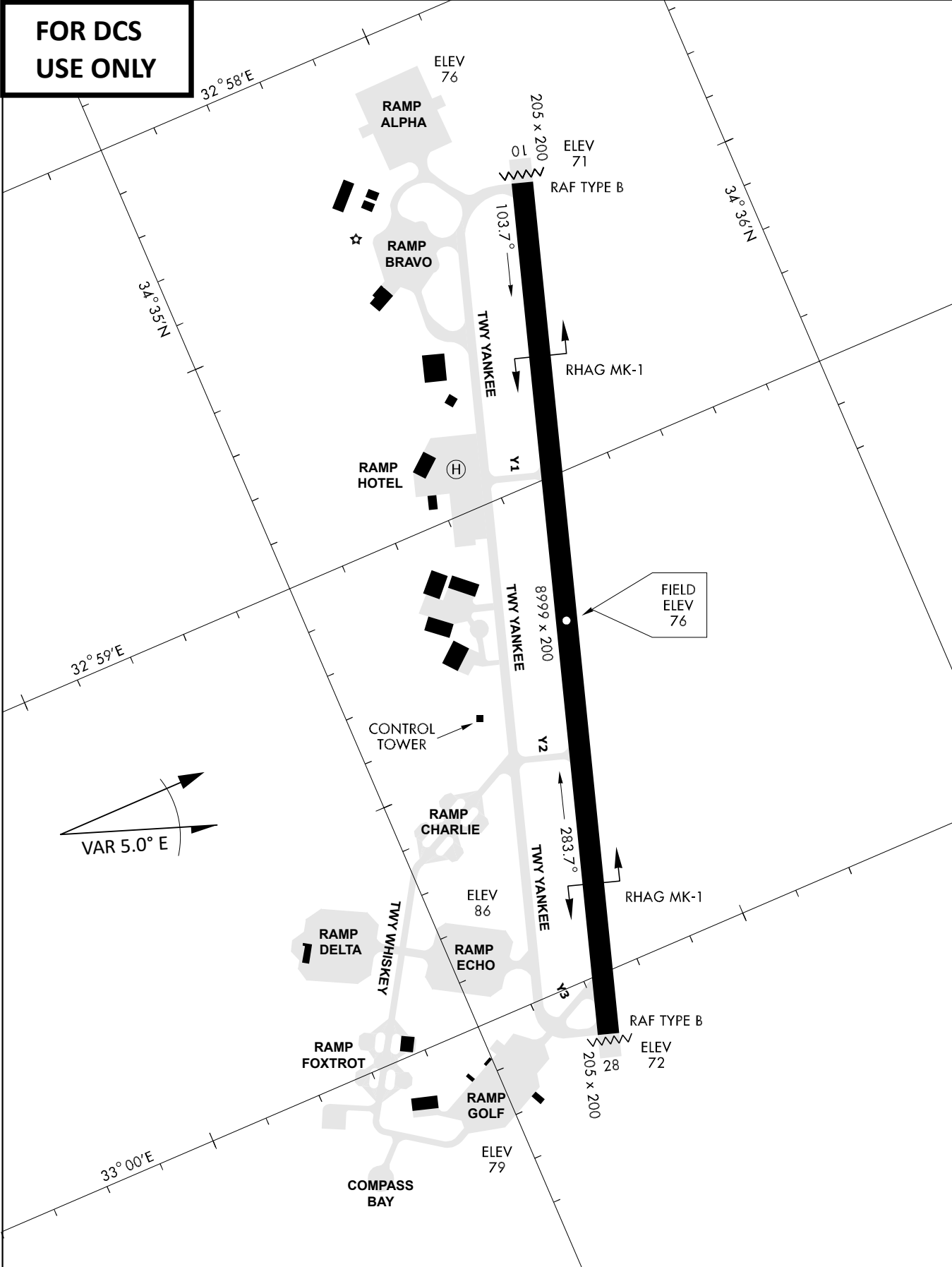
DEP RWY28 PAPA: Fly straight ahead to exit.

DEP RWY28 LAKE: Fly straight ahead until coast, than right turn direct exit.

DEP RWY28 SIERRA: Fly straight ahead until coastline, then climbing left turn, intercept AKR R-180 to exit.

DEP ECHO: no exit.

**FOR DCS
 USE ONLY**



ATIS	AKROTIRI GND	AKROTIRI TWR	OVERLORD CONTROL	TACAN	FIELD ELEVATION
288.20 MHz	240.10 122.10	339.85 130.075	377.8	AKR 107X	75 [ft] 23 [m]