

MISSION DATA CARD

OPORD		Callsign		Mission		Date/Time	
1160/2022		Vanguard 5		Training		122000SEP22	
Task	gun & attack pattern						Freq
AO	Insurgent Town Range						133.5
Departure				Recovery			
Helicopter VFR				Helicopter VFR			
#	Callsign	Pilot		IFF	TCN	LSR	NET
-1	Vanguard 5-1	Hudson/Hudson		3351	21Y	1331	
-2	Vanguard 5-2	Hazel/Hazel		3352	84Y	1332	
-3	Vanguard 5-3	Warblade		3353	84X	1333	
-4	Vanguard 5-4	Butcher		3354	21X	1334	

LOADOUT

A/A		GUN	100% HEDP
A/G		CHF	30
POD		FLR	60
TKS		FUEL	100%

TOLD

	Takeoff	Target	Joker	Bingo	Land
FUEL	2513				

AIRBASES

	Name	TCN	ATIS	GND	TWR	RWY	Elev	ILS
Dep	Akrotiri AFB	107X	288.2	240.1	339.85	28	62	109.7
Arr	Akrotiri AFB	107X	288.2	240.1	339.85	28	62	109.7
Div	Paphos Internationl	79X	127.3		353.8	29	40	108.9

FLIGHTPLAN

#	Name	Navaid/Coords/DME	ALT	TOT
1	LAKE	N34 45.06 E032 55.29		
2	Town Range	N34 47.25 E032 58.62		

COMMS

Radio	Usage
1	133.50
2	339.85, 377.8
3	35.35

NOTES

spawn range "insurgent town"
exit via "Lake", formation/speed/spacing by FL
Aufbau attack pattern, Angriff mit gun
bei 50% guns : neues Pattern
RTB Akrotiri via "Lake".

OTHER FLIGHTS

Callsign	Mission	Airframe	Freq	TCN	Grpld	Laser
Edelweiss 6	Training	1x A-10C	134.65	21/84	40	166X
	AO		Task	BJT Airmanuvers		
Tiger 1	Training	4x F/A-18C	261.15	21/84	1	156X
	AO	GMT-Range Cyprus	Task	A/G RADAR Training		
Raptor 1	Training	4x F-16C	134.25	21/84		156X
	AO	BVR Range	Task	BVR Training		
Cougar 1	CAP	4x F-14B	261.25	21/84		156X
	AO	Sterile BVR Range	Task	BVR Training		

RADIO CHANNELS

#	Freq	Name
1		Flight/Squadron specific
2	288.2	Akrotiri ATIS
3	240.1	Akrotiri Ground
4	339.85	Aktrotiri Tower
5	335.05	Akrotiri Approach
6	360.1	Incirlik Tower
7	371.35	Incirlik Ground
8	377.475	Incirlik ATIS
9		No Preset
10	127.3	Paphos ATIS
11	353.8	Paphos Tower
12	304.0	CVN-73 George Washington
13	302.0	LHA-1 Tarawa
14	259.0	CV-59 Forrestal
15		No Preset
16	377.8	Overlord
17	265.0	KC-135 Texaco-1 medium/slow
18	319.8	KC-135 Arco-1
19	360.8	KC-135MPRS Arco-2
20	256.0	S-3B Recovery Tanker

RAMROD

0	1	2	3	4	5	6	7	8	9
V	O	U	C	H	S	A	F	E	D

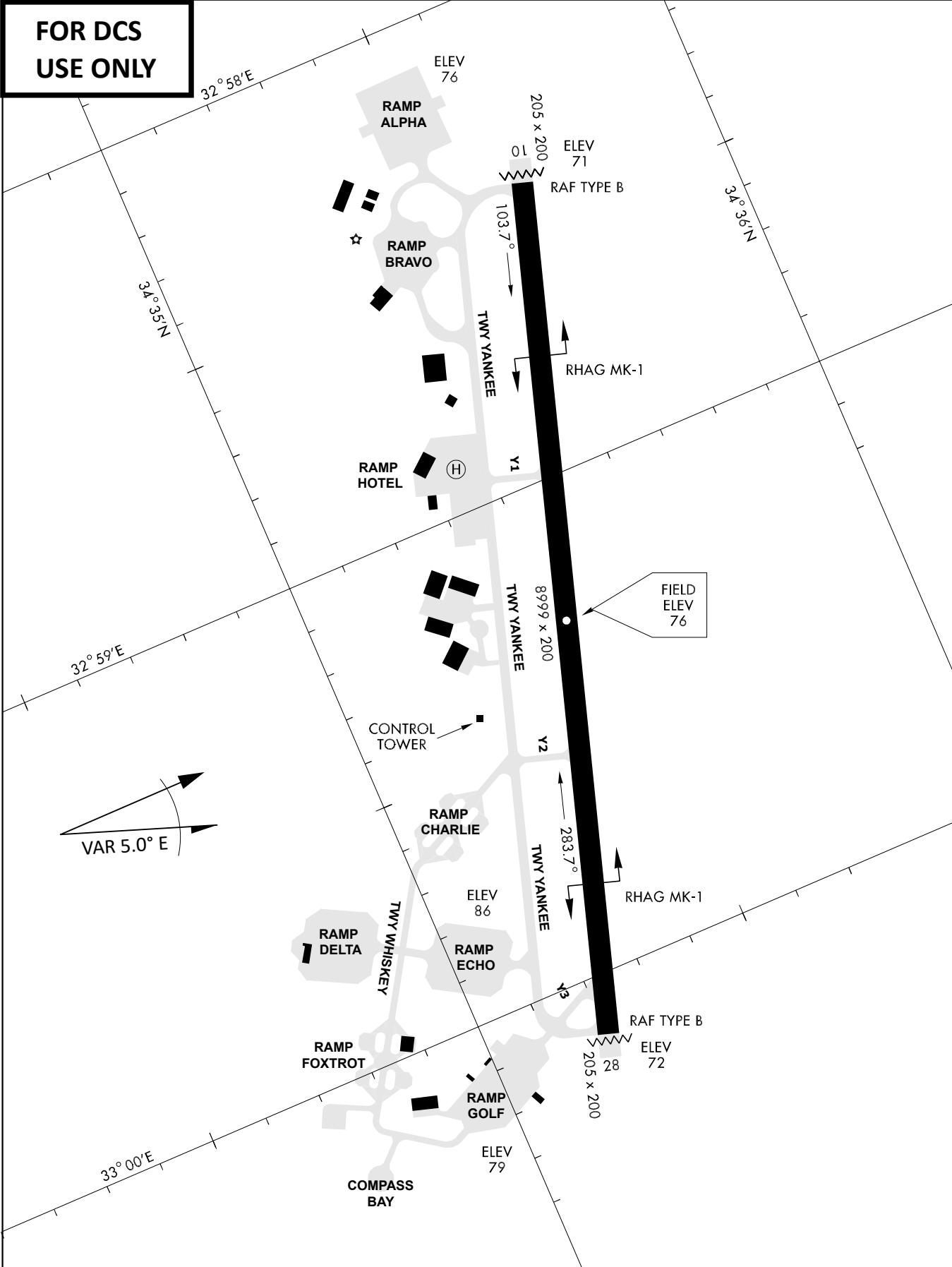
KTC 1400 C

	0	1	2	3	4	5	6	7	8	9
A	GWNT	MPO	QIH	VB	LD	UCK	YR	AJ	XF	ES
B	JYLP	WFH	CTG	AN	ED	MKQ	BI	OV	RX	SU
C	NVYX	LOR	WSA	MT	KG	QCF	PJ	DB	HI	EU
D	KHFL	QOG	YND	RE	SI	XMW	PA	TB	UV	JC
E	AJBV	XFE	WRQ	GI	HP	DUT	KL	MY	ON	SC
F	JXKG	MPO	EVF	CH	YI	ULR	DB	NT	WS	AQ
G	IHLJ	NVM	CSE	BD	RF	WUG	YP	KT	XA	OQ
H	HRJK	TON	XYQ	CI	AE	PSB	MV	UG	WD	FL
I	QFAT	GHR	USM	VI	WN	XCO	DL	BP	YK	EJ
J	CFQP	KAJ	BDT	EO	NV	RSU	GM	HL	IY	WX
K	REDQ	GLN	SPH	OK	MV	WCT	UB	XY	FI	AJ
L	UVCK	AOP	HLM	DT	FS	RNE	QI	JX	GB	WY
M	AUKI	ELM	XBV	GJ	CQ	FOS	PN	TR	WD	HY
N	VMKT	DRO	QAL	SY	GC	JWN	IP	HU	EX	BF
O	UMVF	LKW	QSC	IR	AH	NEG	OX	TP	YD	JB
P	JGNY	VDX	HUF	CO	QT	MKI	ER	BL	SW	PA
Q	HCKJ	WUE	LMA	GI	PS	ODX	NV	BQ	FT	RY
R	UPLK	TBI	VFG	XM	OJ	RSH	DE	NA	WQ	YC
S	ONTK	XSY	CAL	UW	IJ	BDR	MQ	VF	GH	EP
T	VQME	XPK	ANU	CY	GI	TBW	HS	DO	LJ	RF
U	JCPM	UTV	WBQ	KL	FI	EOA	DX	NY	SR	HG
V	PVXI	TCE	GAQ	JD	NR	MBS	HU	OW	FK	LY
W	IJYS	AVC	EWB	XO	RN	DMP	FG	TB	UQ	LK
X	WYMB	KGU	PCO	AI	SL	HTN	FE	QV	XJ	RD
Y	RJUM	AGW	QDB	YS	VN	HEK	CT	FL	IO	XP

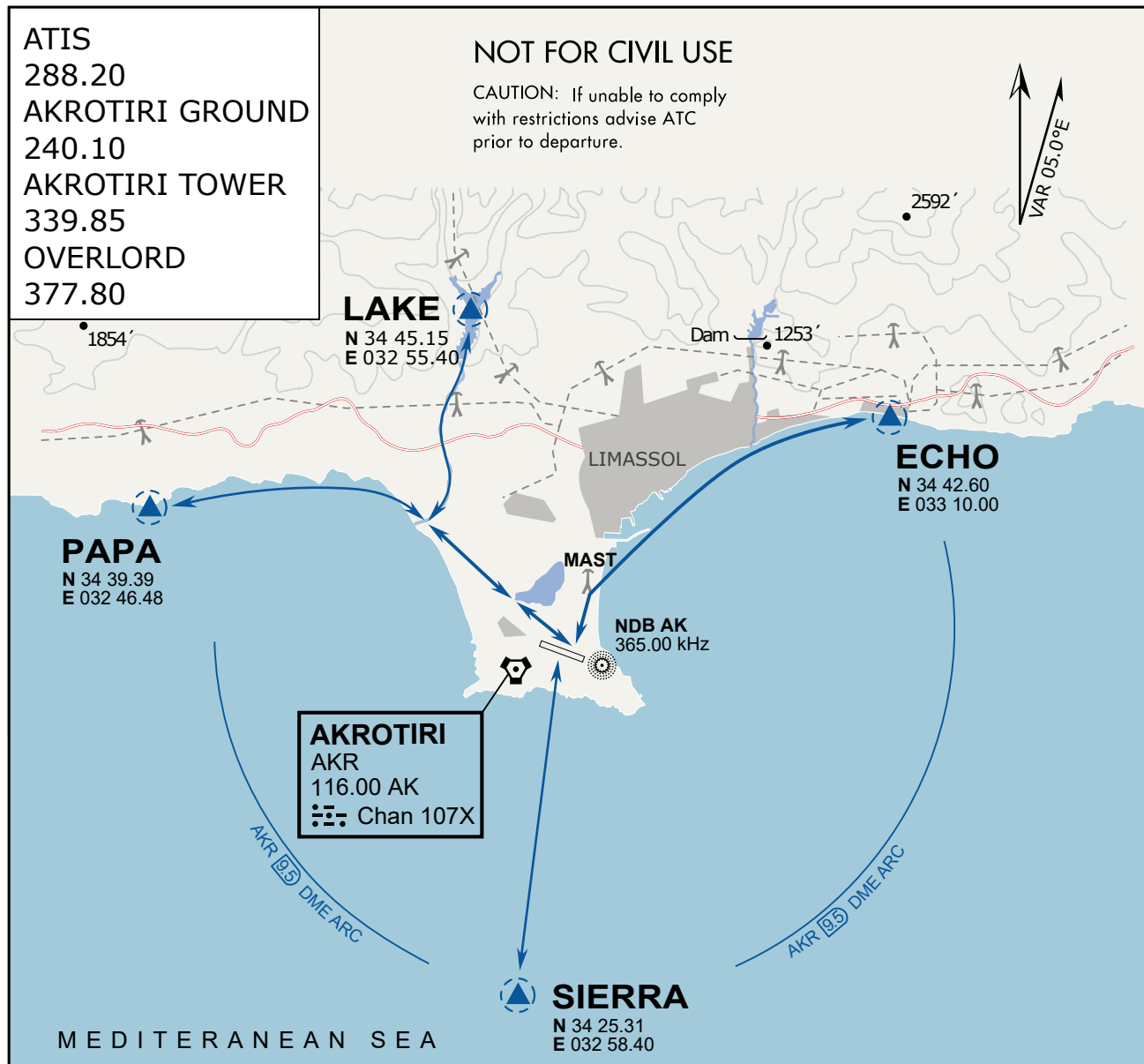
NAVAIDS

Id	Name	Channel	Position	Elevation
DAN	Incirlik	21	N37 00.950 E035 26.883	243
AKR	Akrotiri	107	N34 34.765 E032 57.769	147
PHA	Paphos	79	N34 42.997 E032 28.963	35
RMD	Ramat David	84	N32 39.892 E035 11.265	136
OS66	Kuweires Military Aviation Institute	36	N36 11.362 E037 34.226	1200

**FOR DCS
 USE ONLY**



ATIS	AKROTIRI GND	AKROTIRI TWR	OVERLORD CONTROL	TACAN	FIELD ELEVATION
288.20 MHz	240.10 122.10	339.85 130.075	377.8	AKR 107X	75 [ft] 23 [m]



ARR / DEP ROUTE DESCRIPTION

GENERAL

Stay at or below 500' AGL.

DEPARTURE

ECHO: Via the 4 masts, along the coastline to EXIT.

LAKE: Stay SOUTH WEST of the dry lake, to the river mouth, follow river to EXIT.

PAPA: Stay SOUTH WEST of the dry lake, follow coastline to EXIT.

SIERRA: Direct EXIT.

ARRIVAL

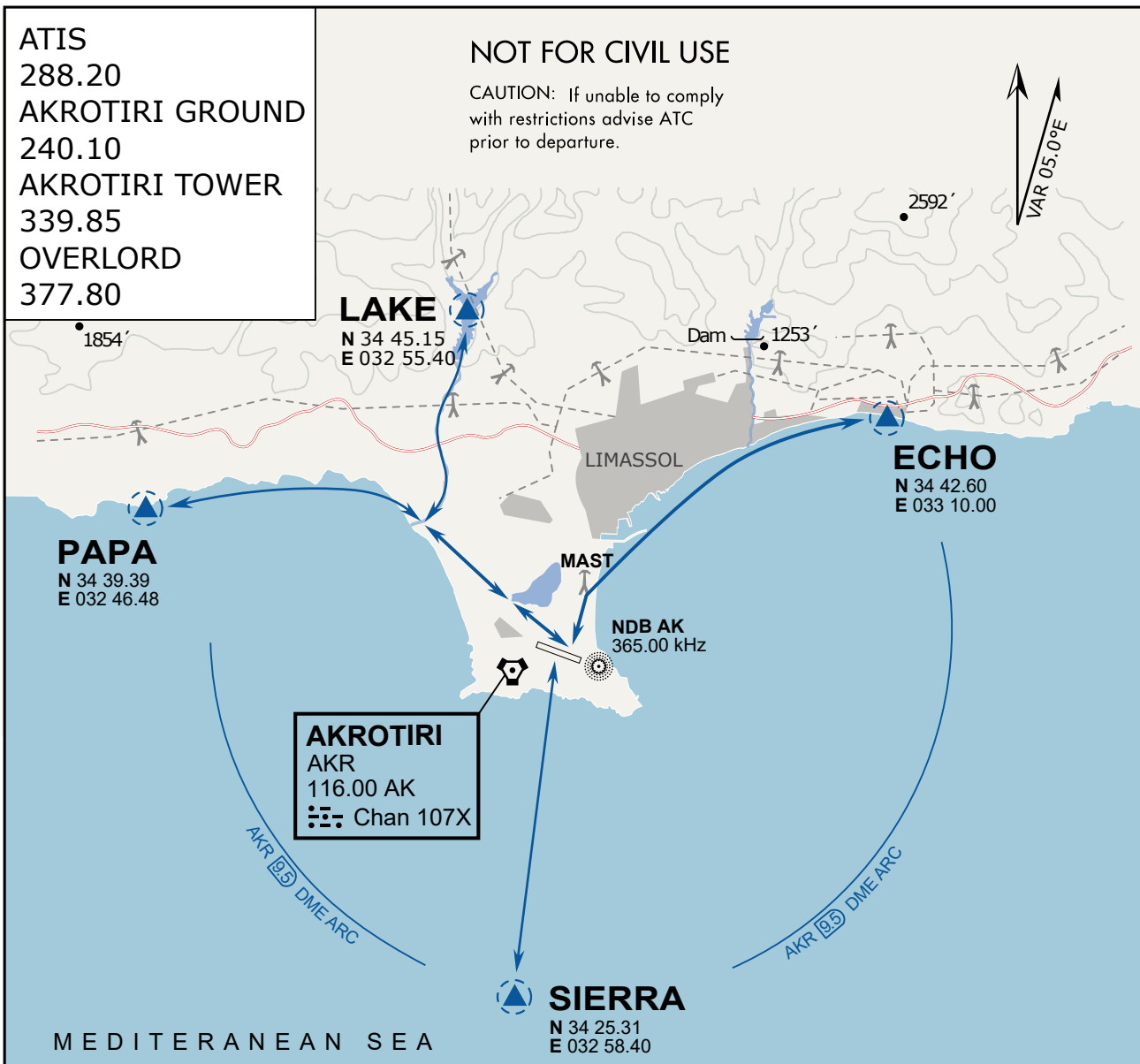
LAKE: Follow river to coastline, then direct LCRA.

PAPA: Follow coastline to rivermouth, then direct LCRA.

ECHO: Follow coastline to the 4 masts, then to LCRA.

SIERRA: Direct to LCRA.





ARR / DEP ROUTE DESCRIPTION

GENERAL

Stay at or below 500' AGL.

DEPARTURE

ECHO: Via the 4 masts, along the coastline to EXIT.

LAKE: Stay SOUTH WEST of the dry lake, to the river mouth, follow river to EXIT.

PAPA: Stay SOUTH WEST of the dry lake, follow coastline to EXIT.

SIERRA: Direct EXIT.

ARRIVAL

LAKE: Follow river to coastline, then direct LCRA.

PAPA: Follow coastline to rivermouth, then direct LCRA.

ECHO: Follow coastline to the 4 masts, then to LCRA.

SIERRA: Direct to LCRA.

NOT AVAILABLE

NOT AVAILABLE