

**MISSION DATA CARD**

OPORD		Callsign		Mission		Date/Time	
1109/2022		Monster 1		Training		292000AUG22	
Task	AAR					Freq	
AO						132.15	
Departure				Recovery			
FYTTR LOW				ARCOE			
#	Callsign	Pilot	IFF	TCN	LSR	NET	
-1	Monster 1-1	Lenzi	1411	25Y	1611	21/01	
-2	Monster 1-2	G-Rex	1412	88Y	1612	21/02	
-3	Monster 1-3	Marsy	1413	88X	1613	21/03	

**LOADOUT**

A/A	A9M			GUN	100% CM		
A/G	7M274			CHF	0		
POD	TGP, A184			FLR	480		
TKS				FUEL	50%		

**TOLD**

	Takeoff	Target	Joker	Bingo	Land
FUEL	5543				

**AIRBASES**

	Name	TCN	ATIS	GND	TWR	RWY	Elev	ILS
Dep	Nellis AFB	12X	270.1	275.8	327.0	21L	1850	109.1
Arr	Nellis AFB	12X	270.1	275.8	327.0	21L	1850	109.1
Div	Creech AFB	87X	290.45	275.8	360.6			

**FLIGHTPLAN**

#	Name	Navaid/Coords/DME	ALT	TOT
1	Texaco3	N36 20 W116 14	15000	
2	WP1	N36 00.321 W115 36.170	23000	
3	WP2	N36 10.655 W114 57.594	23000	
4	MMM	N36 46.157 W114 16.648	23000	
5	Taxaco1	N37 28 W114 39	17000	
6	ARCOE	LSV 357/30 (N36 44.260 W114 55.020)		
7	Nellis	N36 14.680 W115 01.500		

**COMMS**

Radio	Usage
1	132.15
2	11-3-4-16-11-4-3
3	31.50

## NOTES

TO via FYTTR low

rondevue with TEXACO 3 for AAR drill

Las Vegas overflight at Angels 23 direct MMM

second AAR drill with Texaco 1

RTB via Arcoe

**SUPPORT****Tanker**

Callsign	TCN	Freq	ALT	TAS
TEXACO 1	94Y	265.0	17000	290
	Pos	AR-641A: CDC 242/78 (N3728 W11439)		
TEXACO 3	22Y	300.05	15000	280
	Pos	AR-231V: BTY 126/37 (N3620 W11614)		

## OTHER FLIGHTS

Callsign	Mission	Airframe	Freq	TCN	Grpld	Laser
Edelweiss 6	Training	2x A-10C	134.65	21/84	40	166X
AO		Task	BJT procedures			
T-Rex 1	Training	4x A-10C	132.25	27/90	25	165X
AO		Task	AAR			
Rattler 4	Training	3x AH-64D	133.5	21/84		125X
AO	Range 63	Task	CPG			
Edelweiss 1	Training	4x F/A-18C	264.15	21/84		171X
AO		Task	AAR			
Edelweiss 7	Training	4x F-16C	134.75	21/84	41	167X
AO		Task	AAR			
Tiger 1	Training	4x F/A-18C	261.15	11/74	1	155X
AO	Range 74.06	Task	A/G RADAR Training			
Raptor 1	Training	4x F-16C	261.25	21/84		156X
AO		Task	AAR			

**RADIO CHANNELS**

#	Freq	Name
1		Flight/Squadron specific
2	289.4	Nellis Clearance Delivery
3	275.8	Nellis Ground
4	327.0	Nellis Tower
5	385.4	Nellis Approach/Departure West
6	273.55	Nellis Approach/Departure East
7	317.525	Nellis Control -- Sally
8	254.4	Nellis Control-- Lee
9	305.6	SOF Bullseye
10	343.725	EMERGENCY SINGLE FRQ
11	270.1	Nellis ATIS
12	360.625	Creech AFB Tower
13	250.1	HAVE QUICK 13
14	251.1	HAVE QUICK 14
15	252.1	HAVE QUICK 15
16	377.8	Blackjack
17	265.0	KC-135 AR-641A
18	360.8	KC-135MPRS AR-635
19	319.8	KC-135MPRS AR-625
20	300.05	KC-135 AR-231V

**RAMROD**

0	1	2	3	4	5	6	7	8	9
W	I	N	G	S	P	R	E	A	D

**KTC 1400 C**

	0	1	2	3	4	5	6	7	8	9
A	FCMG	EHD	UBP	OQ	LW	SXI	AK	RT	VJ	YN
B	NEXR	ITY	SHL	QK	JP	OMF	UC	BV	DA	GW
C	UTGV	ADY	CSQ	EJ	RK	XOB	NI	FW	HM	LP
D	NPAB	VML	IJX	RF	SG	KYT	QW	HE	CU	DO
E	VTPY	UGD	WSE	CM	IL	RNA	HX	JF	BO	KQ
F	JDTQ	MRH	AIU	KV	SX	GOL	CP	EB	NY	FW
G	SIEV	AWK	XCU	QR	OD	YPJ	MB	HG	TF	LN
H	SBWE	DLY	XGC	RA	JT	FIN	PU	OM	VQ	HK
I	QJVO	GEU	MFC	BT	SY	LDI	WH	PN	RA	KX
J	MVRJ	LPQ	AUG	DB	NE	SCF	KI	OY	TW	XH
K	NVKU	OBT	DEW	CR	XS	AYH	LQ	JP	IM	FG
L	GEMR	XFC	VID	BY	SQ	OAL	KN	TH	PU	JW
M	YKXR	SUN	JDM	PQ	OE	VBT	FH	AG	WL	IC
N	KMCE	DVS	UIJ	LH	XB	RFA	WN	QO	GP	TY
O	CFLO	HQY	KSB	IV	UM	WTG	JD	XE	RP	NA
P	UQDE	CWY	KSH	AV	XM	NOI	PG	BT	LR	JF
Q	EGXJ	IPS	THQ	FR	ON	BWA	KY	VM	LD	CU
R	EPSM	CUQ	VBJ	LW	XY	IOD	NH	AG	FT	RK
S	PEHD	KYB	FVM	QT	IL	URO	GC	JW	NX	AS
T	JBKF	RUN	TLI	MX	CS	OQW	DG	HV	AE	PY
U	RTVE	CIG	SAH	DN	OL	WFX	BU	MQ	PK	JY
V	MEAY	JXI	BVN	LW	KU	FCQ	RH	GP	OD	TS
W	ONTV	ECX	PUK	MB	IA	HGQ	JR	SW	FD	YL
X	JKRX	MCD	OVA	EH	NW	GTS	FU	LQ	PY	BI
Y	BUMF	CQI	SGN	WH	VA	YEJ	PL	OK	XT	RD

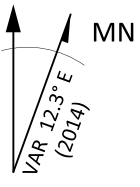
**NAVAIDS**

<b>Id</b>	<b>Name</b>	<b>Channel</b>	<b>Position</b>	<b>Elevation</b>
BCE	Bryce Canyon	75	N3741.35 W11218.23	9040
BIH	Bishop	33	N3722.62 W11821.99	4114
BLD	Boulder	114	N3559.75 W11451.82	3650
BTY	Beatty	94	N3648.54 W11644.86	2925
CDC	Cedar City	120	N3747.24 W11304.90	5463
DAG	Daggett	79	N3457.75 W11634.69	1760
EED	Needles	99	N3445.96 W11428.43	650
GFS	Goffs	91	N3507.87 W11510.59	4019
GRL	Groom Lake	18	N3713.91 W11548.16	4475
HEC	Hector	74	N3447.83 W11627.78	1854
ILC	Wilson Creek	110	N3815.02 W11423.65	9318
INS	Creech AFB	87	N3635.20 W11540.12	3101
LAS	McCarran Intl	116	N3604.78 W11509.59	2142
LSV	Nellis	12	N3614.68 W11501.50	1864
MLF	Milford	58	N3821.62 W11300.79	4977
MMM	Mormon Mesa	90	N3646.16 W11416.65	2120
MVA	Mina	98	N3833.92 W11801.97	7860
OAL	Coale Dale	124	N3800.20 W11746.23	4800
PGS	Peach Springs	57	N3537.48 W11332.67	4754
TPH	Tonopah Muni	119	N3801.84 W11702.01	5330
TQQ	Silverbow	77	N3748.00 W11647.00	5500
UTI	St George	23	N3705.29 W11335.53	2871





RWY 3L-21R  
PCN 46 R/C/W/T  
RWY 3R-21L  
PCN 51 R/C/W/T



PAR	RWY	CAT	MINIMA	ARP	ELEV	Scale
	21L	A B D E	2057 - 0.8 200 (200-0.8/1.6) GS 3°	36° 14.060° N 115° 01.058° W	1857 [ft] 566 [m]	0 300 600 900 1200 1500 [m] 0 1000 2000 3000 4000 5000 [ft]
	3R	A B D E	2057 - 0.8 200 (200-0.8/1.6) GS 3°			
SRA	21R	A C D E	2257 - 1.2 350 (350-1.2/1.6)			
	3L	A C D E	2257 - 1.2 350 (350-1.2/1.6)			

# FYTTR LOW VISUAL OPERATION CHART | VALID 2014

ATIS  
270.100  
NELLIS GROUND  
275.800  
NELLIS TOWER  
327.000  
NELLIS CONTROL  
317.525  
NELLIS DEP/APP EAST  
384.400  
BLACKJACK  
377.800

CAUTION: If unable to comply with restrictions advise ATC prior to departure.



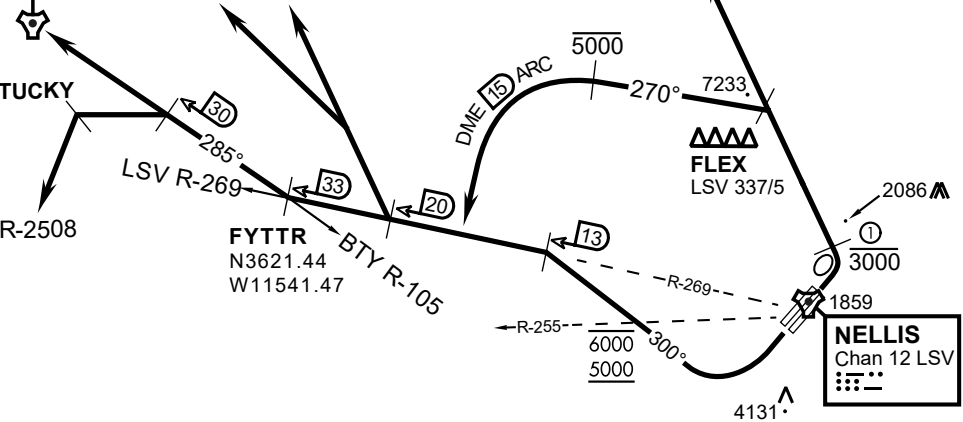
## VMC ONLY

### PILOT RESPONSIBLE FOR TERRAIN AVOIDANCE

① 4 NM from RWY 3L/R

**BEATTY**  
Chan 94 BTY

RANGE 64/65  
RANGE 63



v.1486502 NITTR NAV CHART

### DEPARTURE ROUTE DESCRIPTION

#### TAKEOFF RWY 3L/R:

- Remain below 3,000' MSL until north of Race Track and turned westbound.
- Turn left within 4NM of Nellis direct FLEX. Fly north of FLEX and turn left heading 270°.
- Intercept LSV 15 DME ARC at or below 5,000' MSL.
- ARC south, intercept LSV R-269 outbound. Maintain VFR.

#### TAKEOFF RWY 21L/21R:

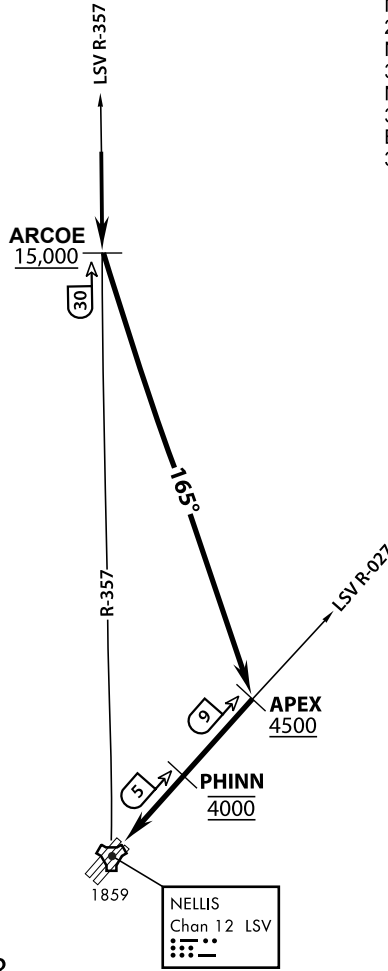
- Follow Noise Abatement Procedures.
- Fly runway heading until past Golf Course, turn right heading 300°.
- Cross LSV R-255 between 5,000' and 6,000' , intercept and proceed outbound on the LSV R-269.Recommend climb to 8,500' MSL or appropriate VFR altitude for overflight of North Las Vegas Training Area. Fly routing for appr. mission/transition.

#### TRANSITIONS:

- R-4806:** Turn right at the LSV 269/20 direct to assigned ranges.
- BEATTY:** Turn right at FYTTR direct BTY via the BTY R-105
- R-2508:** Turn right at the FYTTR, intercept the BTY 105/30, direct TUCKY, then direct R-2508

### FYTTR DEPARTURE AND TRANSITIONS (FYTTR LOW)

ATIS  
 270.100  
 NELLIS GROUND  
 275.800  
 NELLIS TOWER  
 327.000  
 NELLIS CONTROL  
 317.525  
 BLACKJACK  
 377.800



# VMC ONLY

PILOT RESPONSIBLE FOR  
TERRAIN AVOIDANCE

## APPROACH ROUTE DESCRIPTION

### OVERHEAD

Cross ARCOE at or above 15,000 MSL, then heading 165° to APEX.  
 Cross APEX at or above 4,500 MSL, report to tower.  
 Cross PHINN (LSV 027/5) at 4,000 MSL then descend to 3,500 MSL for Initial.

### VFR STRAIGHT IN RWY 21

Cross APEX at 4,000 feet MSL. Descend to be at 3,000 feet MSL at PHINN (LSV 027/5).



INDIAN SPRINGS, NEVADA

TACAN INS Chan 87	APCH CRS 065°	Rwy ldg TDZE 3133	9002 3113
		Arpt Elev 3113	

INDIAN SPRINGS AF AUX (KINS)

**▼** \* MISSED APPROACH: Straight ahead to INS TACAN, intercept INS R-outbound, cross 17 DME at or above 9500, then direkt KSV TACAN 114

NELLIS CON

CREECH AFB TOWER  
118.30 60.60

GND CON

**NOT FOR CIVIL USE**

FOR USE UNDER BASIC VFR WEATHER MINIMUMS ONLY

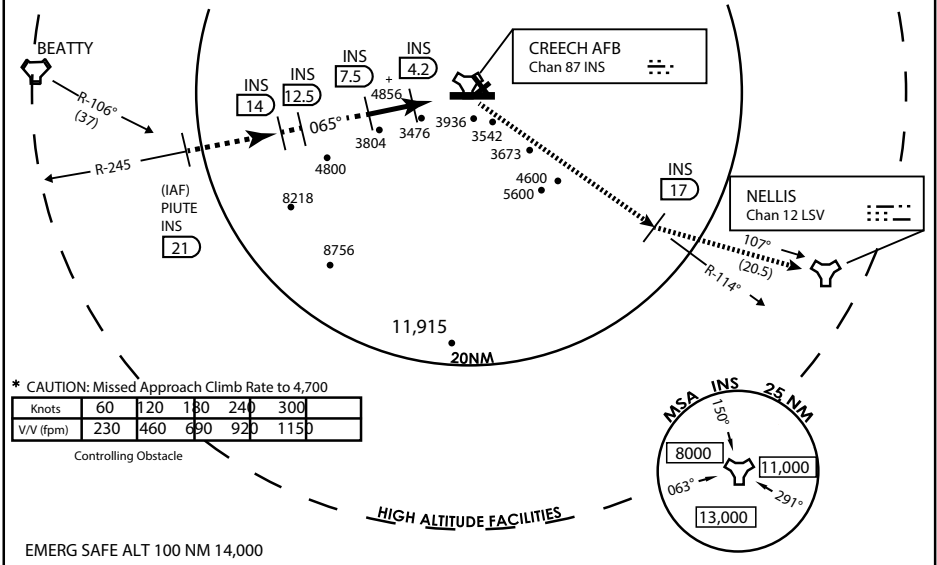
PILOT IS RESPONSIBLE FOR TERRAIN/OBSTACLE AVOIDANCE AND APPROPRIATE VFR CLOUD CLEARANCE FOR ALL

CAUTION: Descent gradients are greater than allowed under standard TERPS criteria and inbound course does not meet straight-in criteria

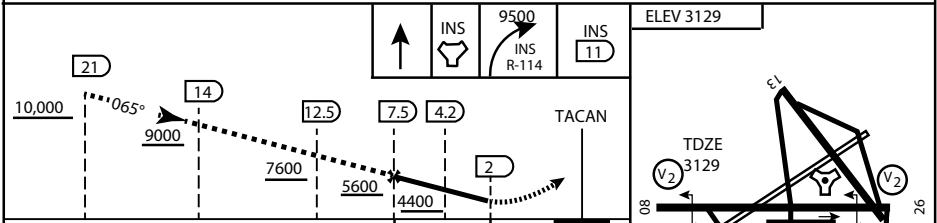
CAUTION: Final approach course crosses Runway centerline at MIDFIELD. Maneuvering left of course required prior to landing. Do not Maneuver farther north than the INS R- 258

Modified by viaBog 66 for use with DCS  
NOT FOR REAL LIFE NAVIGATION

Modified by viaBog 66 for use with DCS  
NOT FOR REAL LIFE NAVIGATION



EMERG SAFE ALT 100 NM 14,000



CATEGORY	A	B	C	D	E	
S-8	3760-1 ½	627 (700-1 ½)	3760-1¾ 627 (700-1¾)	3760-2 627 (700-2)	3760-2¼ 627 (700-2¼)	
CIRCLING	NOT AUTHORIZED					MIRL Rwy 8-26

CITY OF INDIAN, NEVADA

INDIAN SPRINGS AF AUX (KINS)

(FOR DAY VFR USE ONLY)



# AIRPORT DIAGRAM

476 VFG

CREECH AFB (KINS)  
INDIAN SPRINGS, NEVADA

ATIS  
 122.5  
 CREECH TOWER  
 118.4 360.7 38.65  
 GND CON  
 118.3 275.8  
 CLNC DEL

FIELD  
 ELEV  
 3127

HOT  
 CARGO  
 PAD

VAR 12.5° E

WEST EOR

CONTROL  
 TOWER  
 BASE  
 OPS

RPA LOLA WEST

RPA LOLA EAST

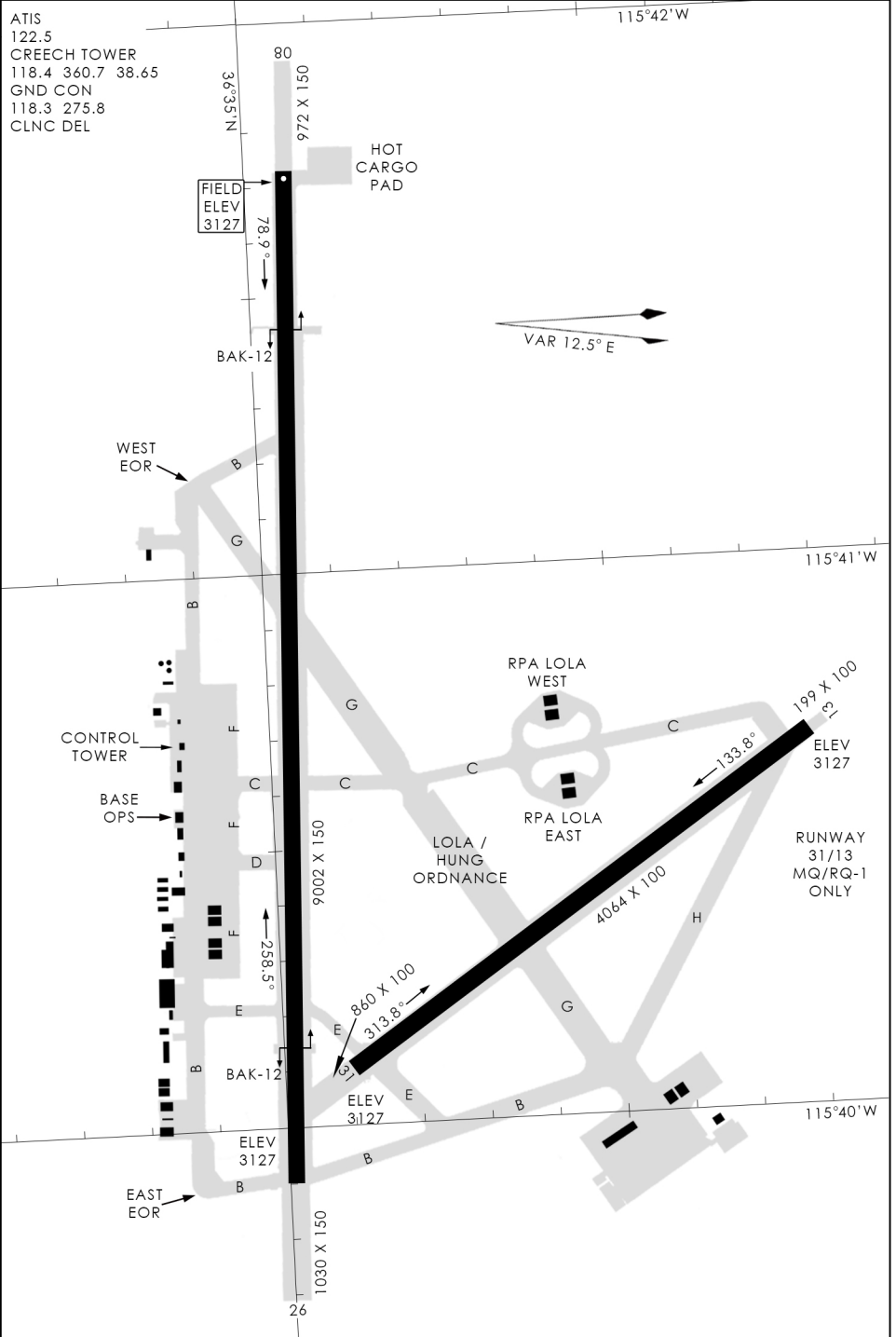
LOLA / HUNG ORDNANCE

RUNWAY  
 31/13  
 MQ/RQ-1  
 ONLY

EAST EOR

476 VFG JAN 2019

476 VFG JAN 2019



# AIRPORT DIAGRAM

INDIAN SPRINGS, NEVADA  
CREECH AFB (KINS)