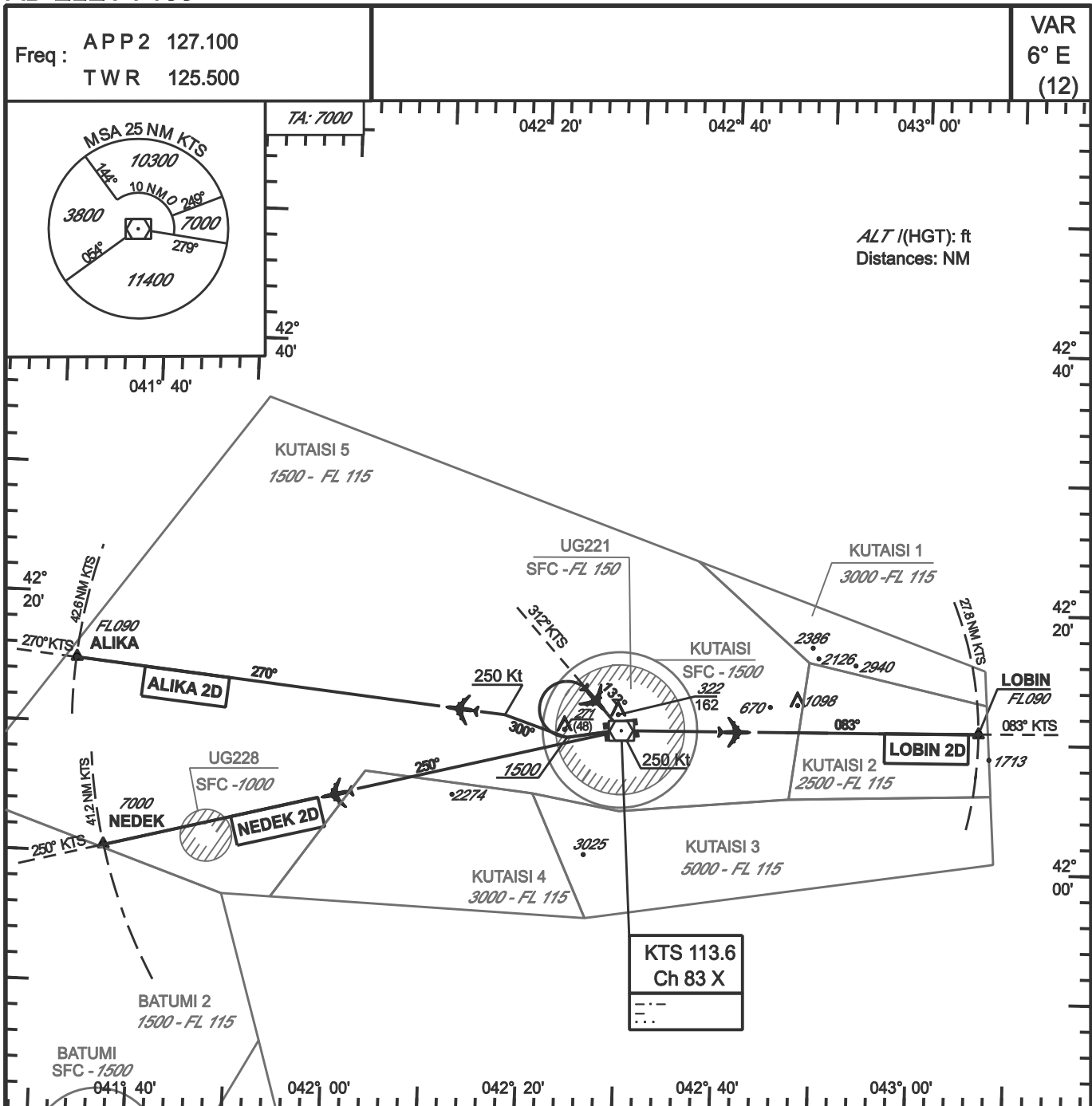


**STANDARD INSTRUMENT DEPARTURE
CAT. A B C D**

KUTAISI/KOPITNARI - UGKO

AD ELEV: 160

SID- RWY 26



SID ALIKA 2D: Climb (1) runway heading (Mag Track 254°) to *FL090 or above*
 At 1500'(1340) turn **right** Mag Track 300° to intercept and follow RDL 270° KTS (Mag Track 270°) inbound ALIKA.
 Do not turn before the DER.
IAS Max during the turns 250 Kt.
 (1) : ATS Required climb gradient: 4.0% until 4000 (3840), then 3.3%

SID NEDEK 2D: Climb runway heading (Mag Track 254°) to *7000' or above*.
 Then intercept and follow RDL 250° KTS (Mag Track 250°) inbound NEDEK.
 Do not turn before the DER.
IAS Max during the turns 250 Kt.

SID LOBIN 2D: Climb runway heading (Mag Track 254°) to *FL090 or above*
 At 1500'(1340) turn **right** to intercept and follow RDL 312° KTS (MagTrack 132°) inbound KTS.
 Then proceed to LOBIN RDL 083°KTS (Mag Track 083°).
 Do not turn before the DER.
IAS Max during the turns 250 Kt.