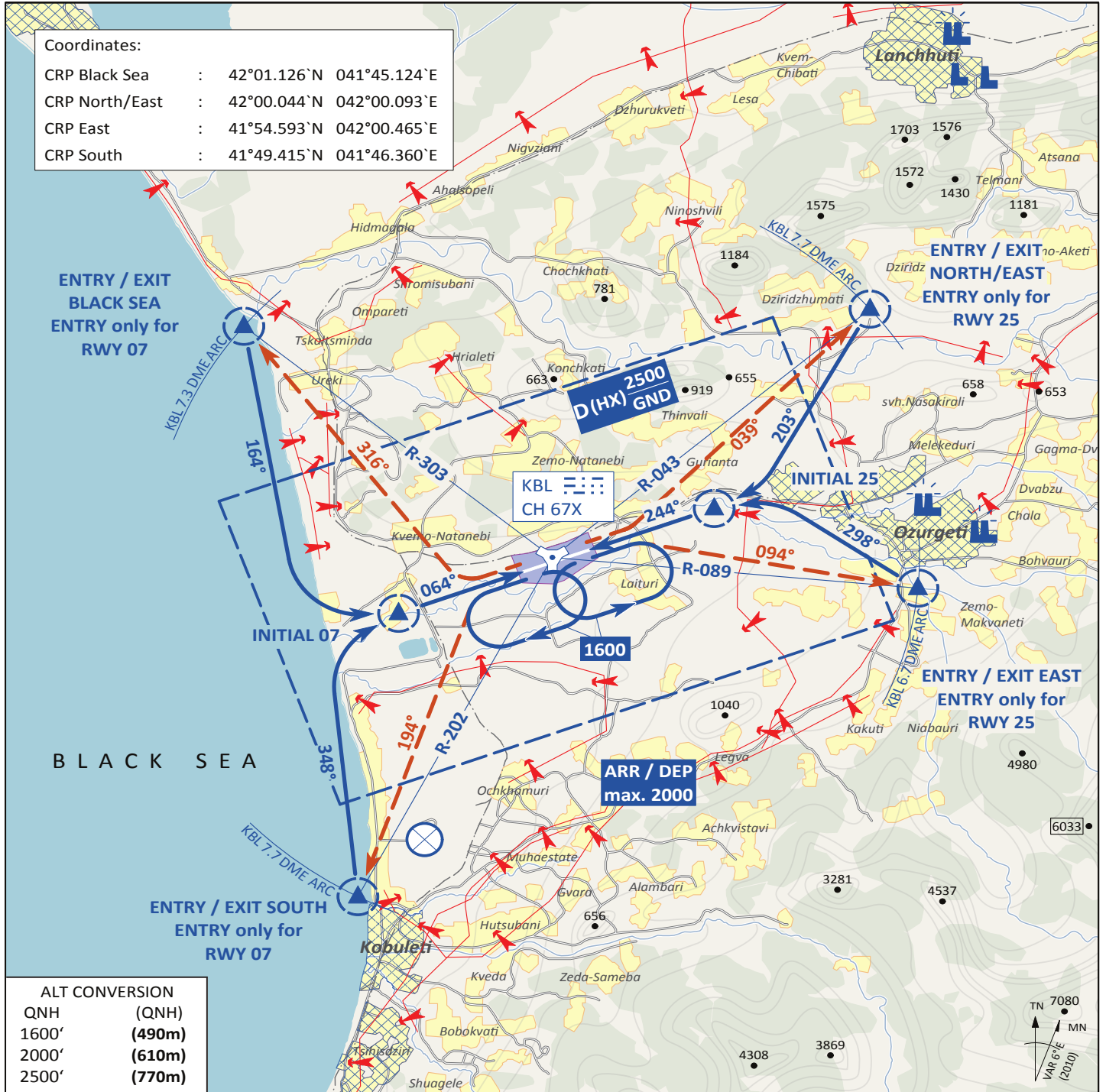


ARR/DEP JET RWY 07/25
VISUAL OPERATION CHART

VAD 01

KOBULETI (UG5X)



PSN THR	VAR	ARP	ELEV	Scale 1:200'000
RWY 07 41° 55.640' N 041° 50.975' E	6° E	41° 55.797' N	59 [ft]	0 1 2 3 4 5 6 7 [km]
RWY 25 41° 55.952' N 041° 52.642' E	(2010)	041° 51.809' E	18 [m]	0 1 2 3 [NM]

- Landing instructions shall be requested latest 2 minutes prior to reaching ENTRY CRP
- Avoid overflying of densely populated areas

AI Tower	Human Tower	Radar	Final - Precision	TACAN	ILS RWY 07
133.000 MHz	133.100 MHz			KBL (CH 67X)	111.50 MHz

ARR/DEP JET RWY 07/25

KOBULETI (UG5X)