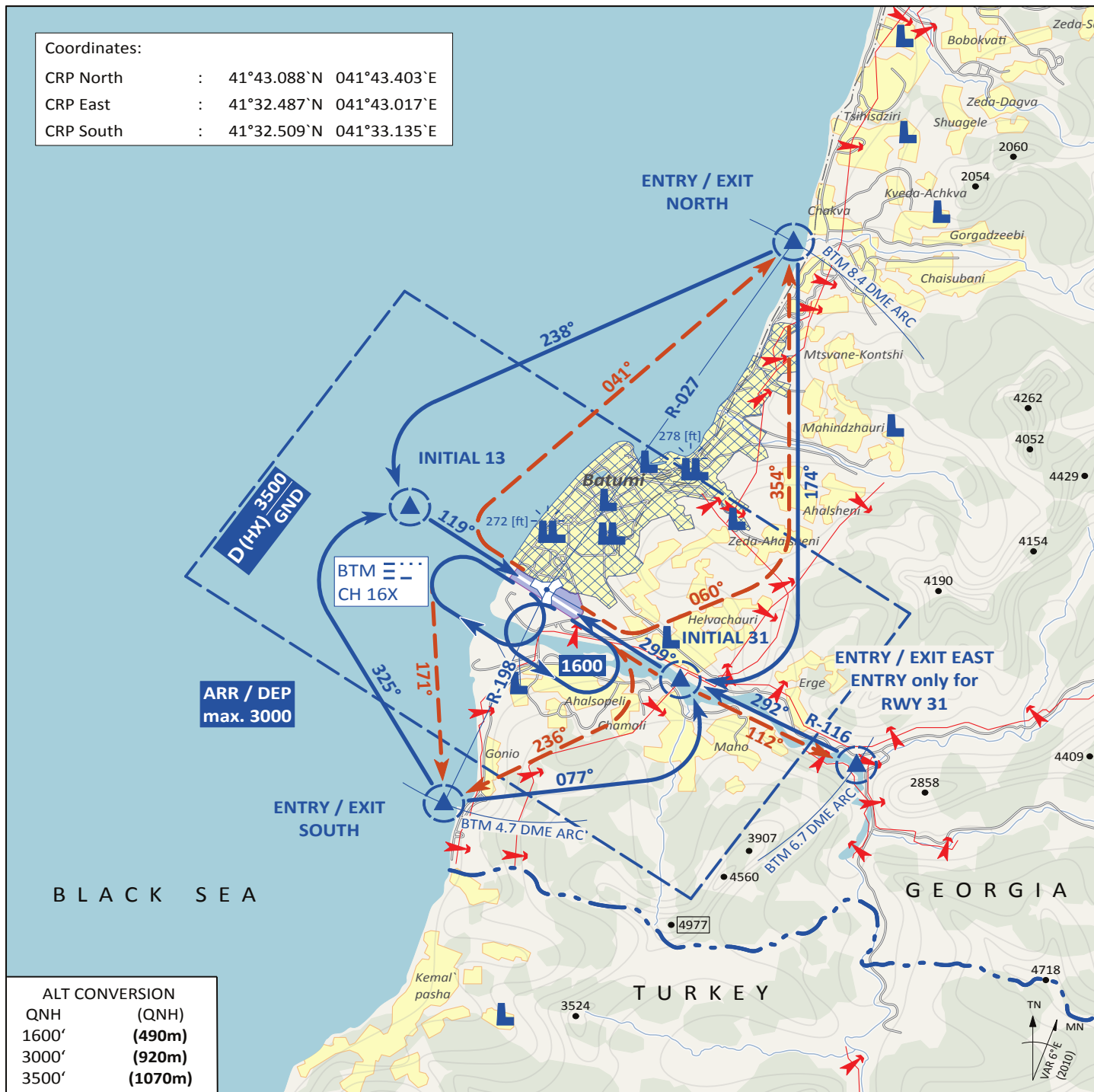


ARR/DEP JET RWY 13/31  
VISUAL OPERATION CHART

VAD 08

BATUMI (UGSB)



PSN THR	VAR	ARP	ELEV	Scale 1:200'000
RWY 13 41° 36.995` N 041° 35.378` E	6° E	41° 36.562` N	33 [ft]	0 1 2 3 4 5 6 7 [km]
RWY 31 41° 36.127` N 041° 36.694` E	(2010)	041° 36.034` E	10 [m]	0 1 2 3 [NM]

- Landing instructions shall be requested latest 2 minutes prior to reaching ENTRY CRP
- Avoid overflying of densely populated areas

AI Tower	Human Tower	Radar	Final - Precision	TACAN	ILS RWY 13
131.000 MHz	131.100 MHz			BTM (CH 16X)	110.30 MHz

ARR/DEP JET RWY 13/31

BATUMI (UGSB)

Visual Operation Chart for DCS World Flight Simulator A-10C Module  
rev 4.0.3 18.05.2013 © vjabog32 - http://www.virtual-jabog32.de - virtuelles Jagdbombergeschwader 32